

J9系列

对夹式蝶阀

Wafer butterfly valve



DOWNLOAD  
DATASHEET



**b**-Smart, Be-Brandoni



[www.brandonivalves.it](http://www.brandonivalves.it)

**brandoni**  
VALVES

## 对夹式蝶阀 / Wafer butterfly valve

J9系列对夹式蝶阀，带有中心式阀板和对夹式阀体，阀体材质可分为球铁和不锈钢两种，严格按照相关产品质量标准生产，符合EN ISO 9001标准。

适用于供热、空调、供水、水处理系统以及工业、农业系统。介质可以是水、压缩空气、燃气和碳氢化合物。（请确保您的选择与适用范围一致）

**YES:** 可安装于管路中部及末端，可频繁开启。上法兰符合ISO 5211标准。可以安装各种执行器和驱动器。可以用于切断和调节流体。

**NO:** 不适用于蒸汽系统。

## 附件

- 用于连接给水总管系统的阀杆延长装置
- 位置指示器和齿轮箱挂锁
- 齿轮箱限位开关
- 用来指示开关位置的限位开关

## 驱动器

- 气动执行器：单作用/双作用
- 可定制：限位开关，位置指示器
- 电动执行器
- 齿轮箱驱动
- 链条驱动

## 认证 / Certifications



符合2014/68/UE PEDex 97/23/CE标准  
符合D.M.174 (98/83/CE指令) 标准和EN 1074-1:2001 - UNI EN 1074-2:2004标准

## 结构及检测标准:

结构长标准: EN558/1-20 (ISO 5752-20, DIN 3202K1)  
法兰标准: EN1092 ISO 7005, ANSI B16.5 #150  
设计标准: EN593, EN12516, ISO 5211, EN12570  
标识标准: EN19  
检测标准: EN 12266 cat. A (ISO 5208 cat. A)

The shut-off wafer butterfly valves in Series J9 are equipped with a centred disc and wafer type body, and are made of ductile iron or stainless steel, manufactured in accordance with severe product norms and in conformity to EN ISO 9001. These valves are suitable for heating and conditioning (HVAC), water treatment and water distribution, industrial applications, agricultural purposes for compressed air, gas, oils and hydrocarbons. (Please ensure the choice of the corresponding item)

**YES:** for in line and end of line installation with frequent actuation; the integrated support, in accordance with ISO 5211, allows easy mounting of a wide range of actuators and drives.

They are suitable for choking and regulating the flow.

**NO:** for steam.

## Accessories

- Extension for main water system connection
- Position indicator and padlocking for gear box
- Micro-switch for gear box
- Kit: micro-switches for ON/OFF position indicator

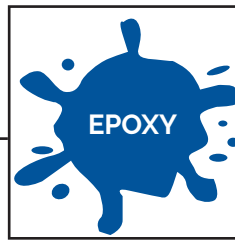
## Actuators

- Double acting and single acting pneumatic actuators
- On request: micro-switches, position indicators
- Electric actuators
- Gear box
- Chain driven control

In conformity with directive 2014/68/UE (ex 97/23/CE PED)  
In conformity with D.M. 174 (directive 98/83/CE) and with UNI EN 1074-1:2001 - UNI EN 1074-2:2004

## Design and testing standards (correspondences):

Face-to-face: EN558/1-20 (ISO 5752-20, DIN 3202K1)  
Flanges: EN1092 ISO 7005, ANSI B16.5 #150  
Design: EN593, EN12516, ISO 5211, EN12570  
Marking: EN19  
Testing: 100% testing in accordance with EN 12266 cat. A (ISO 5208 cat. A)



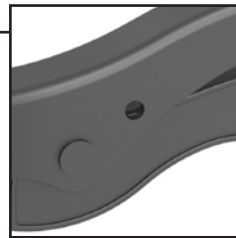
内外环氧树脂喷涂，耐高温。环保水性涂料。涂层厚度为150 μ。

*Inside and outside epoxy coating, high temperature resistant. Environmentally friendly, water-based paint. 150 μ thickness.*



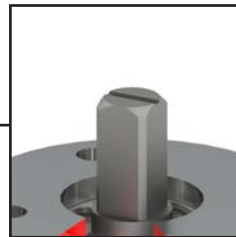
手柄可以锁定在任意刻度，利于调节流量。

*Lever suitable for intermediate regulation.*



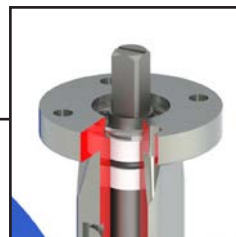
可锁定的操作手柄。

*Lockable operation lever.*



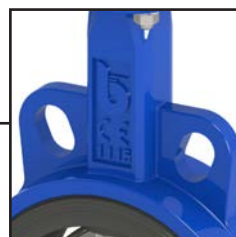
阀轴顶部设有一个指示蝶板位置的凹槽，确保手柄或驱动器移去后仍能准确判断阀门开合，以将手柄或驱动器准确装回。

*A notch machined at the top of the stem indicates the position of the disc and allows adjusting the lever/actuator to the correct position, when the command/lever is removed.*



ISO 5211标准上法兰。

*Integrated ISO 5211 flange.*



DN25-400: 连接孔可连接PN6、PN10、PN16及ANSI 150法兰

DN450-600: 可连接PN10、PN16法兰

*Alignment holes. Suitable for mounting between PN6, PN10, PN16 and ANSI 150 for DN 25-400*

*For DN 450-600 stainless steel for PN 10 and PN 16 flanges.*

### EPDM 阀座



**J9.100**

阀体: EN GJS400-15  
 阀板: EN GJS400镀镍  
 阀座: EPDM  
 工作温度: -10 + 120°C

Body: ductile iron  
 Disc: nickel plated ductile iron  
 Liner: EPDM  
 Temp: -10 a +120°C



**J9.120**

阀体: EN GJS400-15  
 阀板: AISI 316  
 阀座: EPDM  
 工作温度: -10 + 120°C

Body: ductile iron  
 Disc: AISI 316  
 Liner: EPDM  
 Temp: -10 a +120°C



**J9.128**

阀体: EN GJS400-15  
 阀板: AISI 316  
 阀座: EPDM WRAS  
 工作温度: -10 + 80°C  
**Wras认证水温最高80°C**

Body: ductile iron  
 Disc: AISI 316  
 Liner: EPDM  
 Temp: -10 a +120°C  
**Wras approv. up to 80°C**



**J9.170**

阀体: EN GJS400-15  
 阀板: 铝青铜  
 阀座: EPDM  
 工作温度: -10 + 120°C

Body: ductile iron  
 Disc: Aluminium-bronze  
 Liner: EPDM  
 Temp: -10 a +120°C

### NBR 阀座



**J9.101**

阀体: EN GJS400-15  
 阀板: EN GJS400镀镍  
 阀座: NBR  
 工作温度: -10 + 80°C

Body: ductile iron  
 Disc: nickel plated ductile iron  
 Liner: NBR  
 Temp: -10 a +80°C



**J9.101 gas**

阀体: EN GJS400-15  
 阀板: EN GJS400镀镍  
 阀座: NBR  
 工作温度: -10 + 70°C

Body: ductile iron  
 Disc: nickel plated ductile iron  
 Liner: NBR  
 Temp: -10 a +70°C



**J9.121**

阀体: EN GJS400-15  
 阀板: AISI 316  
 阀座: NBR  
 工作温度: -10 + 80°C

Body: ductile iron  
 Disc: AISI 316  
 Liner: NBR  
 Temp: -10 a +80°C



**J9.121 gas**

阀体: EN GJS400-15  
 阀板: AISI 316  
 阀座: NBR  
 工作温度: -10 + 70°C

Body: ductile iron  
 Disc: AISI 316  
 Liner: NBR  
 Temp: -10 a +70°C

### NBR 阀座

### FKM 阀座



**J9.171**

阀体: EN GJS400-15  
 阀板: 铝青铜  
 阀座: NBR  
 工作温度: -10 + 80°C

Body: ductile iron  
 Disc: Aluminium-bronze  
 Liner: NBR  
 Temp: -10 a +80°C



**J9.102**

阀体: EN GJS400-15  
 阀板: EN GJS400镀镍  
 阀座: FKM  
 工作温度: -10 + 150°C

Body: ductile iron  
 Disc: nickel plated ductile iron  
 Liner: FKM  
 Temp: -10 a +150°C



**J9.122**

阀体: EN GJS400-15  
 阀板: AISI 316  
 阀座: FKM  
 工作温度: -10 + 150°C

Body: ductile iron  
 Disc: AISI 316  
 Liner: FKM  
 Temp: -10 a +150°C



**J9.172**

阀体: EN GJS400-15  
 阀板: 铝青铜  
 阀座: FKM  
 工作温度: -10 + 150°C

Body: ductile iron  
 Disc: Aluminium-bronze  
 Liner: FKM  
 Temp: -10 a +150°C

## PTFE阀座



### J9.103

阀体: EN GJS400-15  
 阀板: EN GJS400镀镍  
 阀座: PTFE  
 工作温度: -10 + 120°C

Body: ductile iron  
 Disc: nickel plated ductile iron  
 Liner: PTFE  
 Temp: -10 a +120°C



### J9.123

阀体: EN GJS400-15  
 阀板: AISI 316  
 阀座: PTFE  
 工作温度: -10 + 120°C

Body: ductile iron  
 Disc: AISI 316  
 Liner: PTFE  
 Temp: -10 a +120°C



### J9.173

阀体: EN GJS400-15  
 阀板: 铝青铜  
 阀座: PTFE  
 工作温度: -10 + 120°C

Body: ductile iron  
 Disc: Aluminium-bronze  
 Liner: PTFE  
 Temp: -10 a +120°C

### AISI 316不锈钢蝶板 / Disc AISI 316



### J9.620 EPDM

阀体: AISI 316  
 阀板: AISI 316  
 阀座: EPDM  
 工作温度: -10 + 120°C

Body: AISI 316  
 Disc: AISI 316  
 Liner: EPDM  
 Temp: -10 a +120°C



### J9.621 NBR

阀体: AISI 316  
 阀板: AISI 316  
 阀座: NBR  
 工作温度: -10 + 80°C

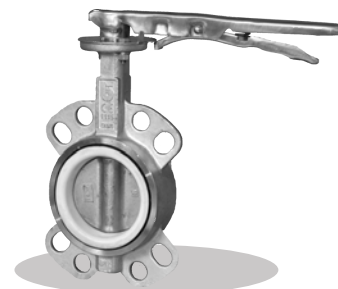
Body: AISI 316  
 Disc: AISI 316  
 Liner: NBR  
 Temp: -10 a +80°C



### J9.622 FKM

阀体: AISI 316  
 阀板: AISI 316  
 阀座: FKM  
 工作温度: -10 + 150°C

Body: AISI 316  
 Disc: AISI 316  
 Liner: FKM  
 Temp: -10 a +150°C



### J9.623 PTFE

阀体: AISI 316  
 阀板: AISI 316  
 阀座: PTFE  
 工作温度: -10 + 120°C

Body: ductile iron  
 Disc: AISI 316  
 Liner: PTFE  
 Temp: -10 a +120°C

### AISI 316不锈钢蝶板 / Disc AISI 316

### 铝青铜蝶板 / Disc Aluminium-bronze



### J9.628 EPDM

阀体: AISI 316  
 阀板: AISI 316  
 阀座: EPDM WRAS  
 工作温度: -10 + 80°C  
**Wras认证水温最高80°C**

Body: AISI 316  
 Disc: AISI 316  
 Liner: EPDM  
 Temp: -10 a +120°C  
**Wras approv. up to 80°C**



### J9.670 EPDM

阀体: AISI 316  
 阀板: 铝青铜  
 阀座: EPDM  
 工作温度: -10 + 120°C

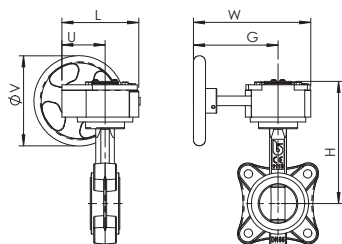
Body: AISI 316  
 Disc: Aluminium-bronze  
 Liner: EPDM  
 Temp: -10 a +120°C



### J9.673 PTFE

阀体: AISI 316  
 阀板: 铝青铜  
 阀座: PTFE  
 工作温度: -10 + 120°C

Body: AISI 316  
 Disc: Aluminium-bronze  
 Liner: PTFE  
 Temp: -10 a +120°C

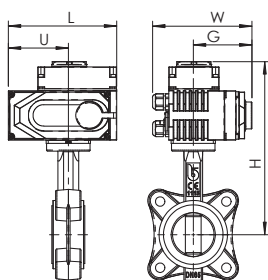


#### J9 + RM

齿轮箱

Gear box

DN	25	32	40	50	65	80	100	125	150	200	250	300	350	400	450	500	600
J9 + RM	RM.0250	RM.0250	RM.0250	RM.0250	RM.0250	RM.0250	RM.0250	RM.0250	RM.0250	RM.0750	RM.1200	RM.1200	RM.1200	RM.1200	3DE-180	3DE-250	3DE-400
L	130	130	130	130	130	130	130	130	130	180	205	205	205	278	278	277	323
U	77	77	77	77	77	77	77	77	77	104	124	124	124	118	118	107	131
H	166	172	178	188	198	212	232	242	262	308	346	372	415	457	519	607	693
W	225	225	225	225	225	225	225	225	225	338	345	345	345	291	291	379	428
G	170	170	170	170	170	170	170	170	170	260	260	260	260	167	167	207	256
V	150	150	150	150	150	150	150	150	150	300	300	300	300	380	380	285	385
重量 / Weight Kg	5.7	5.7	5.8	6.1	6.4	7.02	8.12	9.61	11.11	22.3	32.8	42	43	60	107.7	155.8	231.1

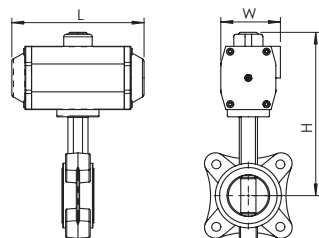


#### J9 + AOX

电动执行器

Electric actuators

DN	25	32	40	50	65	80	100	125	150	200	250	300	350	400
J9 + AOX	003	003	003	003	005	005	008	010	015	030	060	060	100	160
L	123	123	123	123	160	160	160	189	189	268	268	268	268	508
U	74	74	74	74	89	89	89	107	107	152	152	152	152	366
H	217	223	229	239	257	271	291	309	329	394	430	456	499	789
W	100	100	100	100	121	121	121	145	145	225	225	225	225	285
G	65	65	65	65	84	84	84	89	89	119	119	119	119	143
重量 / Weight Kg	3.8	3.8	3.9	4.2	6	6.8	7.9	10.9	12.4	28.4	37.3	43.7	45.2	115.7

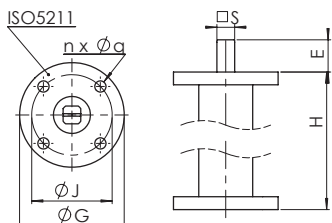


#### J9 + AP

气动执行器

Pneumatic actuator

DN	25	32	40	50	65	80	100	125	150	200	250	300	350	400
J9 + AP DE	AP1	AP1	AP2	AP2	AP3	AP3	AP3	AP3.5	AP4	AP4.5	AP5.5	AP5.5	AP6	AP8
L	142	142	155	155	213	213	213	236	276	310	388	388	468	563
H	191	197	219	229	256	270	290	310	345	402	472	498	565	740
W	60	60	73	73	85	85	85	98	110	128	160	160	175	215
重量 / Weight Kg	2.7	2.7	3.22	3.52	4.94	5.74	6.84	9.98	12.9	23.24	37.44	55.94	62.66	96.6
J9 + AP SE 弹簧复位 - SPRING RETURN	AP2S	AP2S	AP3S	AP3S	AP3.5S	AP3.5S	AP4S	AP4.5S	AP5S	AP6S	AP8S	AP8S	AP8S	AP10S
L	155	155	213	213	236	236	276	310	366	468	563	563	563	750
H	207	213	236	246	316	330	365	412	445	520	646	672	715	725
W	73	73	85	85	98	98	110	128	140	175	215	215	215	290
重量 / Weight Kg	3.26	3.26	4.9	5.2	6.7	7.5	10.5	15.97	20.42	38.86	68.32	86.82	87.86	161

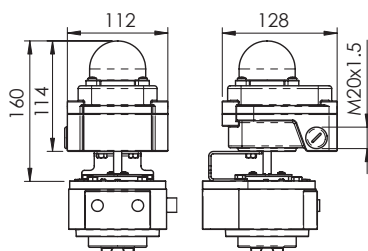
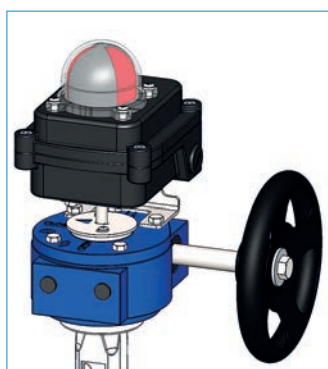


DN	40-100	125-150	200	250-300
H	250-500-800-1000			
ISO 5211	F05	F07	F10	F12
G	65	90	125	150
J	50	F07	F10	F12
n x Ø q	4 x 7	4 x 9	4 x 11	4 x 13
E	20	26	26	26
S	11	14	17	27

### KPROg

用于连接给水总管系统的阀杆延长装置

Stem extension for water main system connection



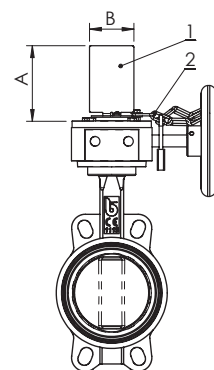
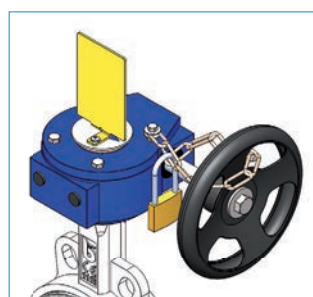
标准机械开关  
可选：普通接近开关，防爆接近开关。

Mechanical switches per standard.  
Available on request: proximity switches, ATEX explosion proof proximity switches.

### KBOXRM

齿轮箱限位开关

Limit switches box for gear box



### KPOSRM

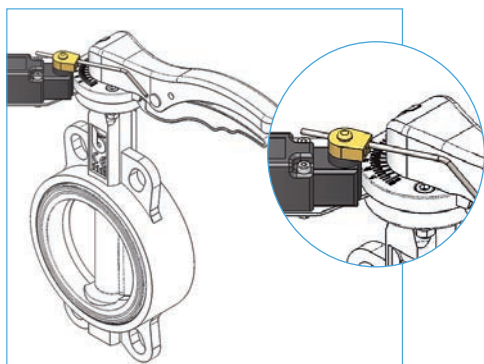
位置指示器及齿轮箱挂锁

Position indicator and padlocking for gear box

DN	25-150	200-400
A	100	120
B	60	80

1) 位置指示器  
2) 挂锁

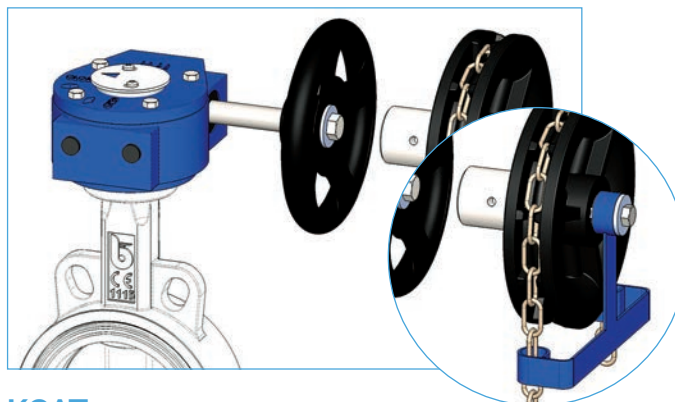
1) Position indicator  
2) Chain for padlocking



### KFC109

用来指示开关位置的限位开关

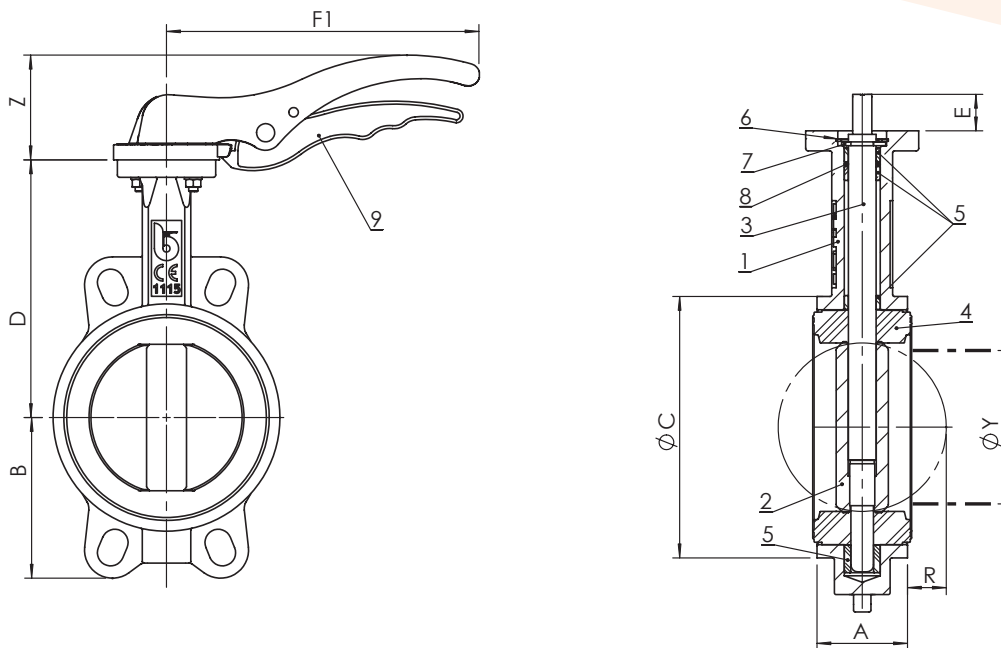
Limit switches kit for ON-OFF indication



### KCAT

链条驱动装置

Chain driver kit

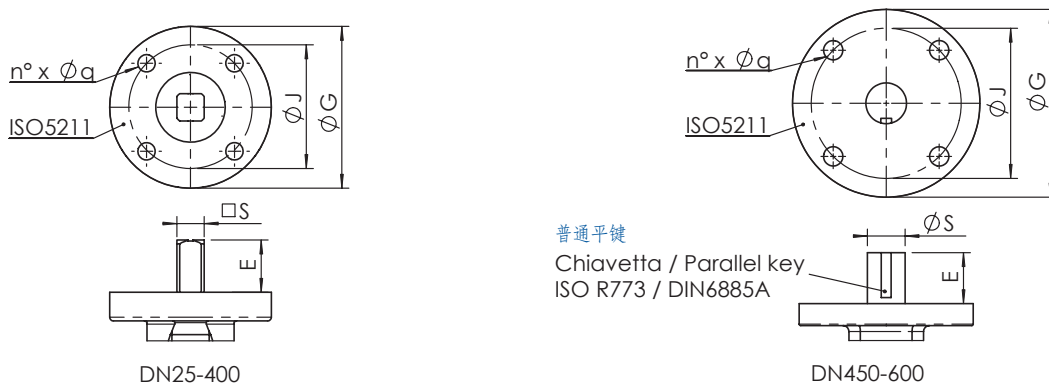


### 尺寸 (mm) / Dimensions (mm)

DN	25	32	40	50	65	80	100	125	150	200	250	300	350	400	450	500	600
A	33	33	33	43	46	46	52	56	56	60	68	78	78	102	114	127	154
ØC	65	73	82	89	102	118	150	174	205	260	318	376	406	471	539	594	695
D	104	110	116	126	136	150	170	180	200	230	266	292	335	360	422	480	562
B	51	56	63	62	69	90	106	119	131	166	202	235	257	292	318	355	444
F1	192	192	170	170	170	206	206	285	285	400	530	-	-	-	-	-	-
Z	68	68	50	50	50	69	69	90	90	72	72	-	-	-	-	-	-
R	-	1	5	5	9	17	26	34	50	71	91	112	128	144	163	182	219
ØY 最小管路直径 / min pipe	-	12	27	31	45	65	90	110	146	194	241	291	324	379	428	475	573

注意: 带有 ≥ DN300 的 EPDM、NBR 和 FKM 阀座和 ≥ DN125 的 PTFE 阀座的阀门将配备手动异径管

NOTE: valves with EPDM, NBR and FKM ≥ DN 300 and those with PTFE ≥ DN 125 will be supplied with MANUAL REDUCER



DN	25	32	40	50	65	80	100	125	150	200	250	300	350	400	450	500	600
ISO 5211	F05	F05	F05	F05	F05	F05	F05	F07	F07	F10	F12	F12	F12	F12	F14	F14	F16
G	65	65	65	65	65	65	65	90	90	125	150	150	150	150	175	175	210
J	50	50	50	50	50	50	50	70	70	102	125	125	125	125	140	140	165
n x q	4 x 7	4 x 7	4 x 7	4 x 7	4 x 7	4 x 7	4 x 7	4 x 9	4 x 9	4 x 11	4 x 13	4 x 13	4 x 13	4 x 13	4 x 18	4 x 18	4 x 22
S	7	7	9	9	9	11	11	14	14	17	27	27	27	27	38	41.15	50.65
E	32	32	21	21	21	21	21	27	27	27	27	27	27	27	51.2	64.2	70.2

1: 请参考说明及建议 / 1: please see Instruction and Recommendations



## 重量(kg) / Weight (kg)

DN	带手柄 with lever	25	32	40	50	65	80	100	125	150	200	250	300	350	400	450	500	600
J9.1		1.7	1.7	1.8	2.1	2.4	3.2	4.3	6.3	7.8	15.0	23.5	-	-	-	-	-	-
J9.6		-	-	-	2.1	2.4	3.1	4.1	6.1	7.5	14.1	22.8	-	-	-	-	-	-

## 扭矩(Nm) / Operating torque (Nm)

DN	25	32	40	50	65	80	100	125	150	200	250	300	350	400	450	500	600
DP bar																	
3	2.9	4.7	7.8	11.3	17	23	33	48	68	120	189	290	298	481	930	1'250	2'270
6	3.1	5.1	8.4	12	18	25	36	54	78	134	212	316	347	551	980	1'350	2'500
10	3.3	5.4	8.8	13	20	26	40	61	88	148	234	342	396	622	1'312	1'848	3'005
16	3.4	5.7	9.2	13	21	28	44	68	99	162	257	367	550	850	1'543	2'112	3'535

注意: 请将扭矩数值乘以1.5倍作为选择驱动装置的依据。

N.B.: In order to choose the right actuator, we recommend multiplying the operating torque figure by a safety coefficient, K=1.5

## 最小管路直径Y / Minimum pipe diameter Y

为确保蝶阀完全打开, 请确保管路内径大于以下值

To ensure complete disc opening, make sure that the inner diameter of the pipe exceeds the following values

DN	25	32	40	50	65	80	100	125	150	200	250	300	350	400	450	500	600
	-	12	27	31	45	65	90	110	146	194	241	291	324	379	428	475	573

## 法兰表 / Flange chart 安装在法兰中间时 / For mounting between flanges

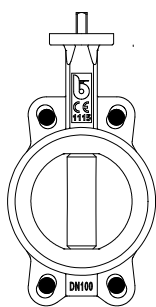
	25	32	40	50	65	80(1)	100	125	150	200	250	300	350	400	450	500	600
PN6 EN1092	v (A)	v (A)	v (A)	v (A)	v (A)	v (D)	v (B)	v (A)	v (A)	v (A)	v (A)	v (A)	v (A)	v (A)	X	X	X
PN10 EN1092	v (A)	v (A)	v (A)	v (A)	v (A)	v (C)	v (A)	v (A)	v (A)	v (A)	v (A)	v (A)	v (A)	v (A)	v (A)	v (A)	v (A)
PN16 EN1092	v (A)	v (A)	v (A)	v (A)	v (A)	v (C)	v (A)	v (A)	v (A)	v (A)	v (A)	v (A)	v (A)	v (A)	v (A)	v (A)	v (A)
#150 ANSI B16.5	v (A)	v (A)	v (A)	v (A)	v (A)	v (D)	v (A)	v (A)	v (A)	v (A)	v (A)	v (A)	v (A)	v (A)	X	X	X

X: 不允许安装 / mounting not allowed

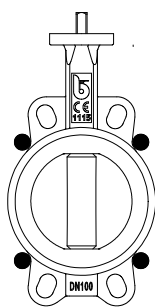
v 允许安装 / mounting allowed

A, B, C, D: 螺栓布置图 / Bolt arrangement

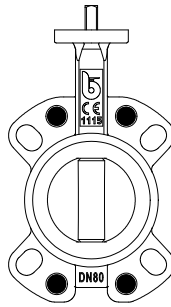
(1): 对于带4孔的DN80 PN10-16, 参见螺栓布置图D / for DN80 PN10-16 with 4 holes see bolt arrangement D



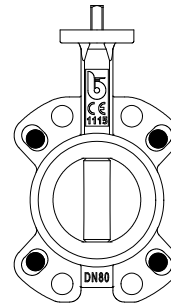
A



B



C



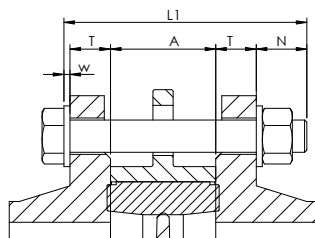
D

## 螺栓长度计算方法 / Bolt length calculation

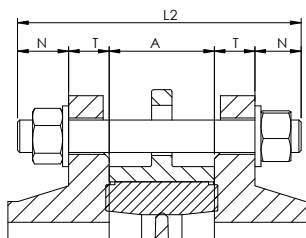
用螺钉安装 / Mounting with screws

用拉杆安装 / Mounting with tie-rods

$$L1 \geq A + 2T + w + N$$



$$L2 \geq A + 2T + 2N$$



DN	25	32	40	50	65	80(1)	100	125	150	200	250	300	350	400	450	500	600
A	33	33	33	43	46	46	52	56	56	60	68	78	78	102	114	127	154
N*	18	24	24	24	24	24	24	26	26	26	32	32	32	32	32	36	40

T = 法兰厚度 (客户)

w = 螺钉头处垫片厚度

T = flange thickness (customer)

w = thickness of washer at the screw head

\* EN1092 PN6/10/16和ANSI 150, 以最大者为准 / Max among: EN1092 PN6/10/16 and ANSI 150.

\*\* 我们不提供螺栓 / We do not supply the bolting.

### 推荐法兰 / Recommended flange types

标准 / Norms	型号 / Type	
EN 1092-1 PN6/10/16	Type 11	对焊法兰 / weld neck
	Type 21	整体法兰 / integral
	Type 02 + 35	对焊环板式松套管法兰 / loose plate with weld ring neck
	Type 02 + 36	翻边环板式松套钢制管法兰 / loose plate with pressed collar
	Type 04 + 34	对焊环带颈松套钢制管法兰 / loose plate with weld neck collar
ANSI B16.1#150° ANSI B16.5#150°		平面法兰 / flat face
		定面法兰 / raised face
		松套法兰 / lap joint

### 材质 / Materials

组件 Component	材质 / Material	
	J9.1	J9.6
1 阀体 Body	球铁 - Ductile iron EN GJS 400 - 15	不锈钢 - Stainless steel ASTM A351 gr. CF8-M
2 蝶板 Disco	镀镍球铁 - Nickel plated Ductile iron EN GJS 400 - 15 / 不锈钢 - Stainless steel ASTM A351 gr. CF8-M / 铝青铜 - Aluminium-bronze CuAl11Fe4 ASTM B148 C94500	不锈钢 - Stainless steel ASTM A351 gr. CF8-M / CuAl11Fe4 ASTM B148 C94500
3 阀杆 DN25-400 Stem DN25-400	AISI 420	AISI 316
3 阀杆 DN450-600 Stem DN450-600	AISI 416	AISI 316
4 阀座 Liner	EPDM / NBR / FKM (Viton®) / PTFE	
5 轴套 Bushing	PTFE	
6 垫片 Washer	镀锌碳钢 Galvanized carbon steel	A4不锈钢 Stainless steel A4
7 卡簧 ISO3075 Circlip ISO3075	弹簧钢 Spring steel	A4不锈钢 Stainless steel A4
8 O型圈 O-ring	FKM (Viton®)	
9 手柄 Lever	DN25-150 铝 - aluminium / DN200-250 球铁 - Ductile iron EN GJS 400-15	
10 螺栓 Bolts	镀锌碳钢 Galvanized carbon steel	A4不锈钢 Stainless steel A4

## 最大工作压力 / Maximum pressure

介质* Fluids*	安装位置 Mounting	
	法兰中间 / BETWEEN FLANGES	管路末端 / END OF LINE
危险性气体 Hazardous gases	16 bar DN25-200 10 bar DN250-350 NO DN400-600	10 bar DN25-100 NO DN125-600
危险性液体 Hazardous liquids	16 bar DN25-400 10 bar DN450-600	10 bar DN25-400 6 bar DN450-600
非危险性气体 Non hazardous gases	16 bar DN25-300 10 bar DN350-500 6 bar DN600	10 bar DN25-300 6 bar DN350-500 4 bar DN600
非危险性液体 Non hazardous liquids	16 bar DN25-400 10 bar DN450-600	10 bar DN25-400 6 bar DN450-600
水** Water**	16 bar	16 bar

\* 危险性气体、液体的认证以 2014/68/EU e 1272/2008 (CLP) 标准为准

\*\* 是指供水和排水系统的水 (PED 2014/68/EU 1.1.2b)

\* hazardous gas, liquids acc. 2014/68/EU e 1272/2008 (CLP)

\*\* For supply, distribution and discharge of water (PED 2014/68/EU 1.1.2b)

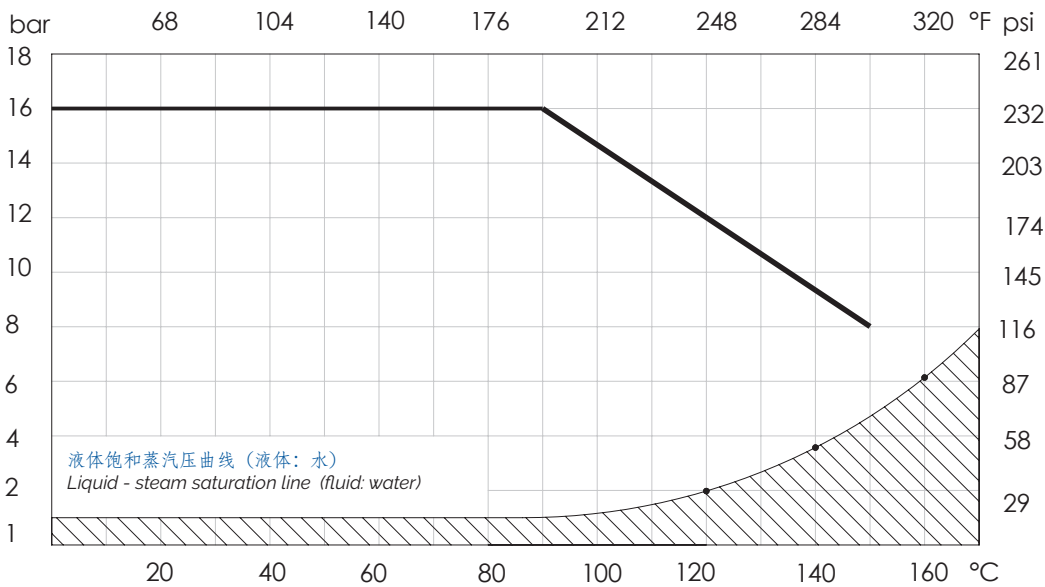
## 工作温度 / Temperature (°C)

温度 Temperature	最低 Min	最高 Max	
		长期 / continuous	短时 / peak
EPDM	-10	120	130
NBR	-10	80	90
FKM (Viton®)	-10	150	170
PTFE	-10	120	120

注意：温度上升时最大工作压力会有所下降；详情请参考压力温度曲线。

NB: the maximum working pressure decreases while the temperature increases; please refer to "pressure/temperature" chart

## 压力温度曲线 / Pressure/temperature chart



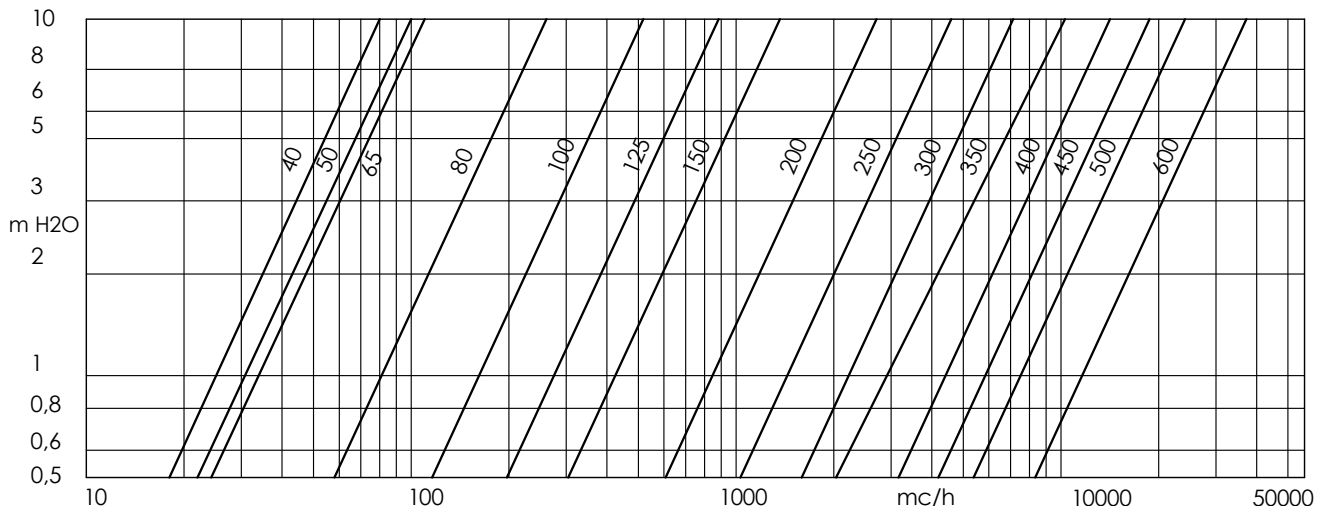
不适用于蒸汽系统。当工作温度和压力处于饱和蒸汽压曲线 (阴影区域) 下方时, 请勿使用该阀门。

**RANGE NOT SUITABLE FOR STEAM.** DO NOT use when temperature and pressure are below the liquid-steam saturation line (hatched area)



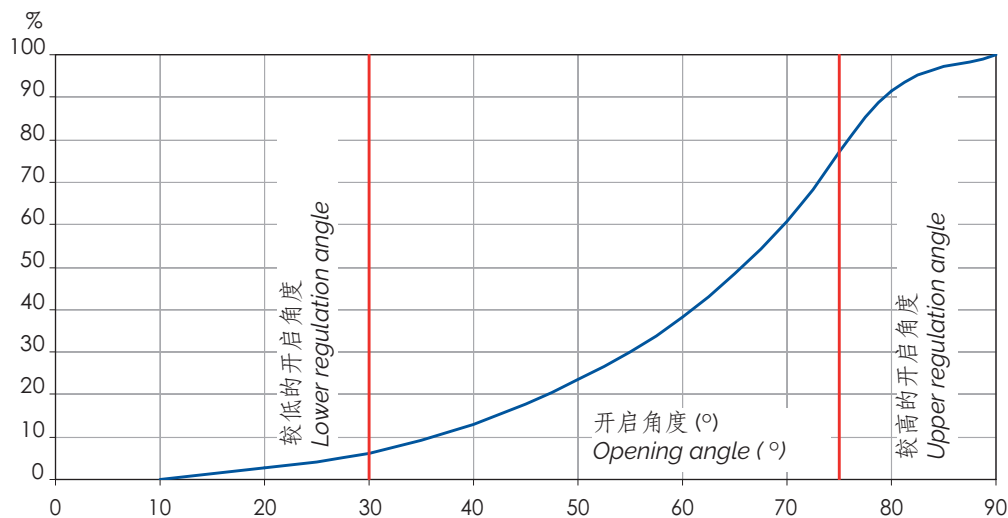
## 水头损失 介质: 水 (1m H<sub>2</sub>O = 0.098bar) - 阀门完全开启时的水头损失

**Head loss Fluid: water (1m H<sub>2</sub>O = 0.098bar) - Head loss with shutter fully opened**



**流通率/开启位置曲线** 在相同水头损失情况下全开时的流通比率

**Flow rate / opening position chart** Flow percentage on the flow at full opening under the same loss of head.



**Kv - DN 表** (m³/h, 当水头损失为1bar时) / **Kv - DN chart** (mc/h per bar)

DN	mm	40	50	65	80	100	125	150	200	250	300	350	400	450	500	600
	ins	1 1/2	2	2 1/2	3	4	5	6	8	10	12	14	16	18	20	24
开启角度 OPENING ANGLE	10°	0,04	0,05	0,00	0,17	0,26	0,43	0,69	2,6	2,6	3,5	5,2	6,9	9,5	12	19
	20°	2,1	2,6	3,8	7,8	15	25	39	52	130	202	292	401	531	683	1055
	30°	4,8	6	14	16	31	53	82	142	276	427	617	849	1124	1445	2234
	40°	10	13	33	34	67	115	177	250	599	926	1376	1839	2437	3133	4840
	50°	19	23	53	60	120	205	316	450	1068	1650	2384	3279	4342	5609	8626
	60°	30	38	75	100	199	339	522	713	1768	2730	3945	5425	7185	9238	14272
	70°	48	60	98	158	314	535	827	1122	2798	4322	6243	8585	11371	14620	22587
	80°	73	91	108	237	471	803	1241	1723	4196	6483	9364	12878	17057	21930	33882
	90°	79	99	108	261	518	883	1364	2716	4611	7124	10291	14152	18743	24099	37232

Brandoni S.p.A保留随时更改产品设计和/或构造的权利，恕不另行通知。更多信息，请访问 [www.brandonivalves.it](http://www.brandonivalves.it)

Brandoni SpA reserves the right to make changes in design and/or construction of the products at any time without prior notice. For further information, please refer to [www.brandonivalves.it](http://www.brandonivalves.it)