

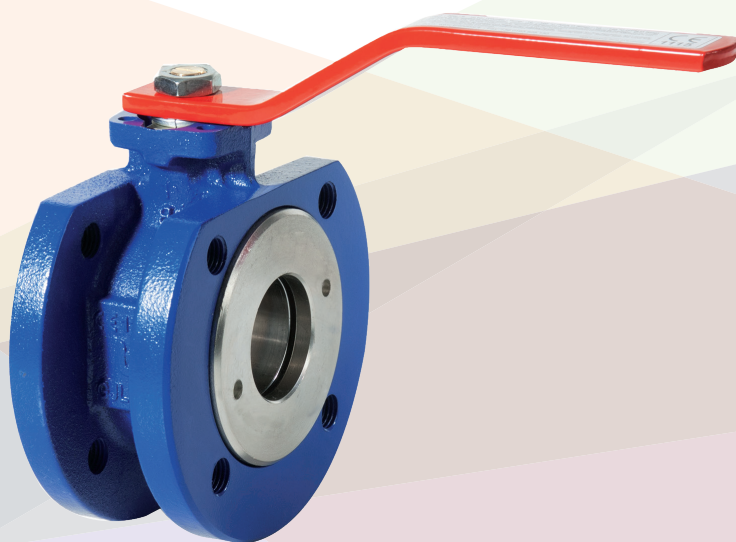
B1系列

对夹式铸铁球阀

Wafer cast iron ball valve



DOWNLOAD
DATASHEET



b-Smart, Be-Brandoni



brandoni
VALVES

www.brandonivalves.com

对夹式铸铁球阀 / Wafer cast iron ball valve

B1系列对夹式球阀，阀体材质为铸铁，球体为浮球，严格按照相关产品质量标准生产，符合ISO 9001标准。

主要适用于供暖和空调系统、集中供热、供水和水处理、工业、农业、消防系统，介质可以是压缩空气、油类及碳氢化合物。

(请确保您的选择与适用范围一致)

YES: 可安装于管路中部及末端，可频繁开启，上法兰符合ISO 5211标准，可连接多种驱动器。

B1系列球阀为全通径，可有效减少流体扰动和水头损失。

NO: 不适用于蒸汽系统及流量调节。

附件

- 隔热延长杆
- 用于给水总管系统的连接方头
- 用于连接给水总管系统的阀杆延长装置
- 手柄锁定装置
- 限位开关和开关位置指示装置
- ISO标准法兰连接装置

驱动器

- 气动执行器：单作用/双作用
- 可定制：限位开关, 位置指示器
- 电动执行器
- 齿轮箱

认证 / Certifications



符合 2014/68/UE PED (ex 97/23/CE)标准
适用于饮用水系统，符合意大利D.M. 174 (98/83/CE指令) 标准

结构及检测标准:

法兰标准: EN1092 ISO 7005
设计标准: EN 1983, EN12516, ISO 5211
标识标准: EN19
检测标准: EN 12266 cat. A (ISO 5208 cat. A)

Series B1 consists of wafer-ball-type shut-off valves, with the body in cast iron and a floating ball, manufactured in accordance with the severe product standards and the quality management of ISO 9001.

Suitable for heating and conditioning (HVAC), district heating, distribution and water treatment, industrial applications, agricultural applications, for compressed air processing, for fire fighting, for oils and hydrocarbons.

(Please ensure the choice of the corresponding item)

YES: for installation in-line and end of line, for services with frequent acting, the integrated ISO 5211 support allows the installation of a wide range of actuators.

The B1 wafer ball valves are full and straight bore reducing turbulences and minimizing head loss.

NO: for steam, for choking and flow regulation.

Accessories

- Stem extension for thermal insulation
- Square cap for water main system connection
- Extension for water main system connection
- Kit for lockable operation lever
- Kit for limit switches for ON/OFF position indicator
- Kit for ISO flanges

Actuators

- Double acting and single acting pneumatic actuators
- On request: limit switches, position indicator
- Electric actuators
- Gear boxes

In conformity with directive 2014/68/UE PED (ex 97/23/CE)
Suitable for drinking water application, comply with Italian regulation D.M.174

Design and testing standards (correspondences) :

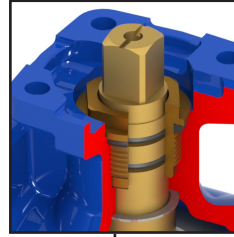
Flanges: EN1092 ISO 7005
Design: EN 1983, EN12516, ISO 5211
Marking: EN19
Testing: 100% testing in accordance with EN 12266 cat. A (ISO 5208 cat. A)



内外环氧树脂喷涂，耐高温。环保水性涂料。

Inside and outside epoxy coating, high-temperature resistance.

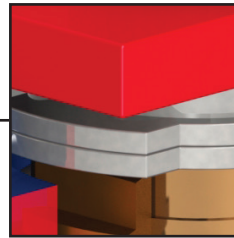
Environmentally friendly water-based paint.



DN40-100, ISO 5211标准上法兰。

DN20-32可安装ISO标准组件。

Integrated flange, in accordance with ISO 5211 for DN 40-100. DN 20-32 suitable for mounting kit ISO.

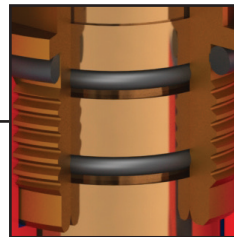


双定位板。

旋转90度重置该定位板可以锁定阀门在开或关的位置。

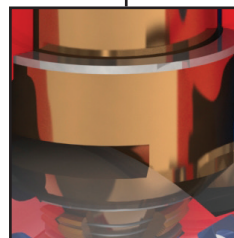
Twin stop plate.

Removing and repositioning one of the plate at 90° allows locking of the valve in ON-OFF position.



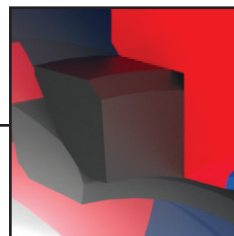
阀杆处的双O型圈动态密封确保阀门即使在最严苛的工作条件下也能正常工作。

The dynamic seal of the stem is guaranteed by a double O-ring, even in severe working conditions.



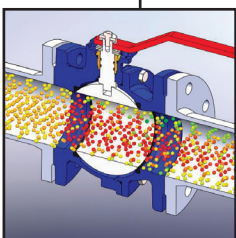
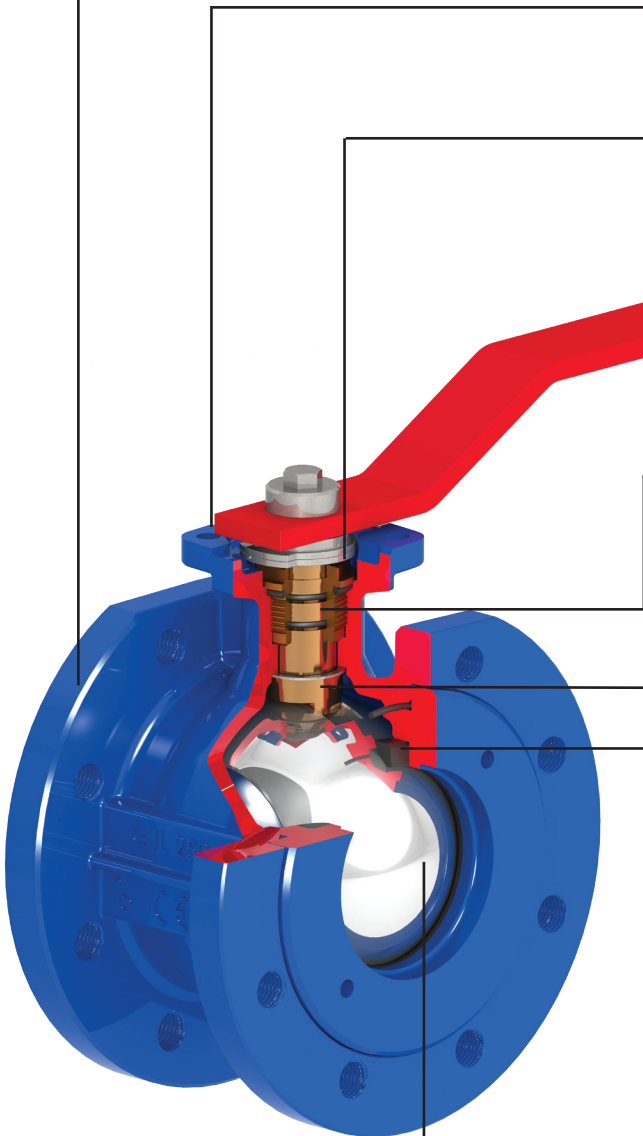
防脱出阀杆。

Blow-out proof stem.



加强型PTFE密封座，可确保温度改变时扭矩保持恒定。

Seat of ball in reinforced PTFE, as temperature changes, the torque remains constant.



全通径球体，材质为表面镀铬黄铜或不锈钢。

Ball with full and straight bore, in chrome-plated brass or stainless steel.

对夹式铸铁球阀 / Wafer cast iron ball valve

O型圈/O-Ring: NBR



B1.000

阀体: EN GJL250
 阀球: 黄铜
 阀杆: 黄铜
 O型圈: NBR
 工作温度: -10 + 100°C

Body: Cast iron
 Ball: Brass
 Stem: Brass
 O-ring: NBR
 Temp: -10 +100°C



B1.010

阀体: EN GJL250
 阀球: AISI 304
 阀杆: 黄铜
 O型圈: NBR
 工作温度: -10 + 100°C

Body: Cast iron
 Ball: AISI 304
 Stem: Brass
 O-ring: NBR
 Temp: -10 +100°C



B1.011

阀体: EN GJL250
 阀球: AISI 304
 阀杆: AISI 304
 O型圈: NBR
 工作温度: -10 + 100°C

Body: Cast iron
 Ball: AISI 304
 Stem: AISI 304
 O-ring: NBR
 Temp: -10 +100°C

O型圈/O-Ring: FKM



B1.000 *

阀体: EN GJL250
 阀球: 黄铜
 阀杆: 黄铜
 O型圈: FKM
 工作温度: -10 + 150°C

Body: Cast iron
 Ball: Brass
 Stem: Brass
 O-ring: FKM
 Temp: -10 +150°C



B1.010 *

阀体: EN GJL250
 阀球: AISI 304
 阀杆: 黄铜
 O型圈: FKM
 工作温度: -10 + 150°C

Body: Cast iron
 Ball: AISI 304
 Stem: Brass
 O-ring: FKM
 Temp: -10 +150°C



B1.011 *

阀体: EN GJL250
 阀球: AISI 304
 阀杆: AISI 304
 O型圈: FKM
 工作温度: -10 + 150°C

Body: Cast iron
 Ball: AISI 304
 Stem: AISI 304
 O-ring: FKM
 Temp: -10 +150°C

- * 非常适合集中供热系统, 可用于最高150°C水温
- * Most suitable for district heating for water up to 150 °C

涂层: 内外环氧树脂喷涂颜色RAL 5002
 Coating: inside and outside epoxy coated RAL 5002 colour

可按客户要求定制特殊类型。
 Special versions on request.

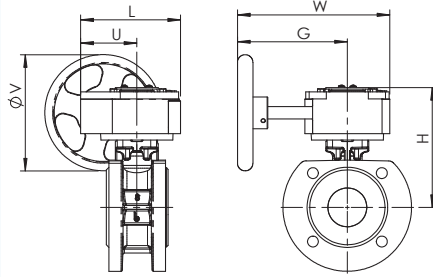
驱动器和附件 / Actuators and accessories



B1 + RM

齿轮箱

Gear box



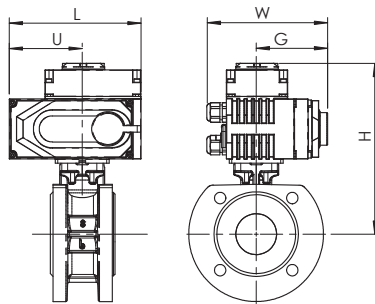
DN	20	25	32	40	50	65	80	100
B1 + RM	RM.0250							
L	130	130	130	130	130	130	130	130
D	77	77	77	77	77	77	77	77
H	154	161	166	141	149	157	180	195
W	225	225	225	225	225	225	225	225
F	170	170	170	170	170	170	170	170
V	150	150	150	150	150	150	150	150
重量 / Weight Kg	6.2	6.84	7.9	9.7	11.4	14.8	17	22.8



B1 + AOX

电动执行器

Electric actuators



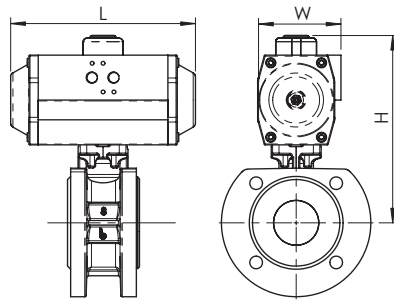
DN	20	25	32	40	50	65	80	100
B1 + AOX	003	003	003	005	005	008	015	015
L	123	123	123	160	160	160	189	189
D	74	74	74	89	89	89	107	107
H	205	212	177	200	208	216	247	262
W	100	100	100	121	121	121	145	145
F	65	65	65	84	84	84	89	89
重量 / Weight Kg	4	4.64	5.7	8.7	10	12.4	16.1	19.4



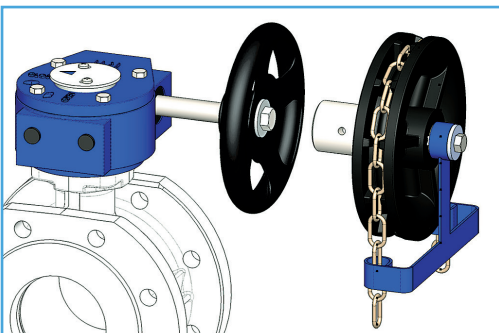
B1 + AP

气动执行器

Pneumatic actuators



DN	20	25	32	40	50	65	80	100
B1 + AP DE / DA	AP2	AP2	AP2	AP3	AP3	AP3	AP4	AP4
L	155	155	155	213	213	213	276	276
H	155	162	167	199	207	215	263	278
W	73	73	73	85	85	85	110	110
重量 / Weight Kg	3.32	3.96	5.02	7.64	8.94	11.34	16.6	19.9
B1 + AP SE 弹簧复位 / SPRING RETURN	AP3S	AP3.5S	AP3.5S	AP3.5S	AP3.5S	AP3.5S	AP4S	AP4.5S
L	213	236	236	236	236	276	310	388
H	212	229	234	259	267	290	350	399
W	85	98	98	98	98	110	128	160
重量 / Weight Kg	5	6.84	7.9	9.4	10.7	13.1	17.7	24.47



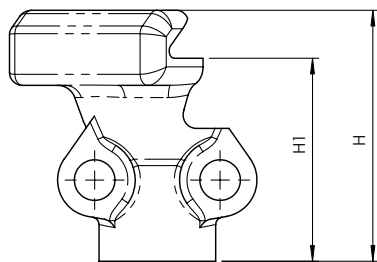
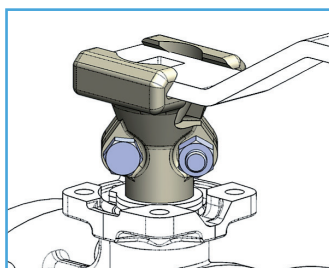
KCAT

链条驱动装置

Chain driver kit

对夹式铸铁球阀 / Wafer cast iron ball valve

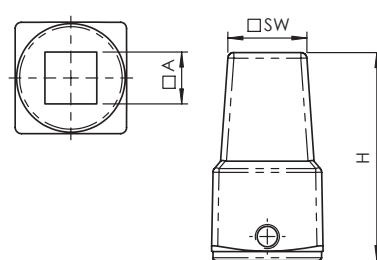
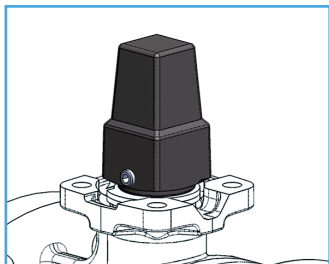
驱动器和附件 / Actuators and accessories



DN	25-32-40-50-65	80-100-125-150
H	68	68
H1	55	55

KITB2

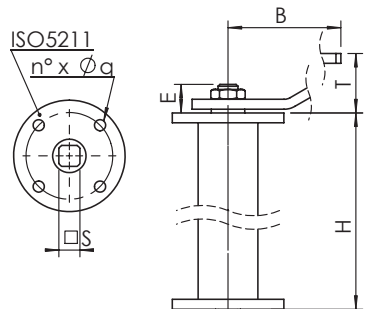
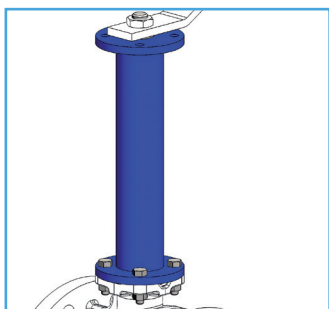
隔热延长杆 / Stem extension for thermal insulation



DN	40-50-65	80-100	125-150
SW	26	26	26
A	14	17	22
H	69	69	71

KCAPB2

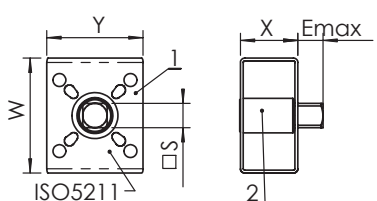
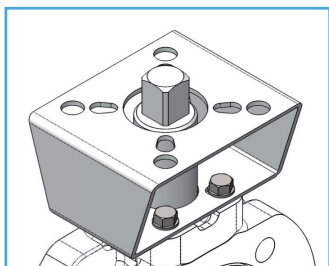
用于给水总管系统的连接方头 / Square cap for water main system connection



DN	40	50	65	80	100	125	150
H	250-500-800-1000						
T	48	48	48	48	48	59	59
B	230	230	230	280	360	450	560
ISO5211	F05	F05	F05	F07	F07	F10	F10
J	50	50	50	70	70	102	102
n° x Øq	4x7	4x7	4x7	4x9	4x9	4x11	4x11
E	22	22	22	23	23	27	27
S	14	14	14	17	17	22	22

KPRB2

用于连接给水总管系统的阀杆延长装置 / Stem extension for water main system connection

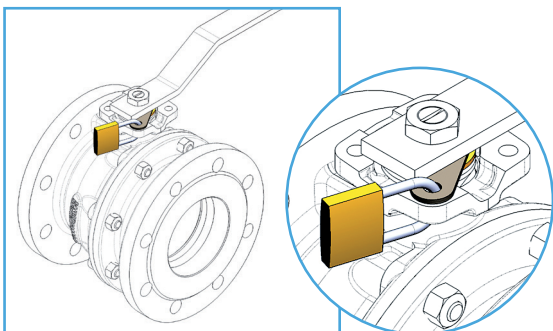


- 1) 支架 / Bracket
- 2) 接头 / Joint

KISO.B1

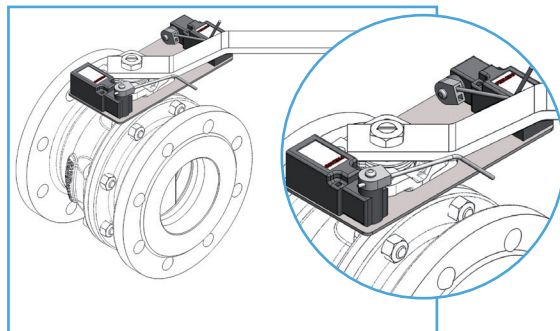
ISO 5211法兰连接装置 / Kit ISO 5211 flange

DN	15-20	25-32	40-50-65	80	100
ISO 5211'	F04-05-07	F04-05-07	F05-07	F10-12	F10-12
S x E	14 x 14	17 x 17	17 x 17	22 x 22	27 X 27
S1 x E1''	11 x 11	11 x 11	-	-	-
钻孔侧 Drilling valve side	F03-04	F03-04	F05-07	F07-10	F07-10
X	40	40	50	60	60
Y	70	70	70	120	120
W	80	80	100	120	120



手柄锁定装置 (仅DN40-100)

Kit lockable operation lever (only DN 40-100)

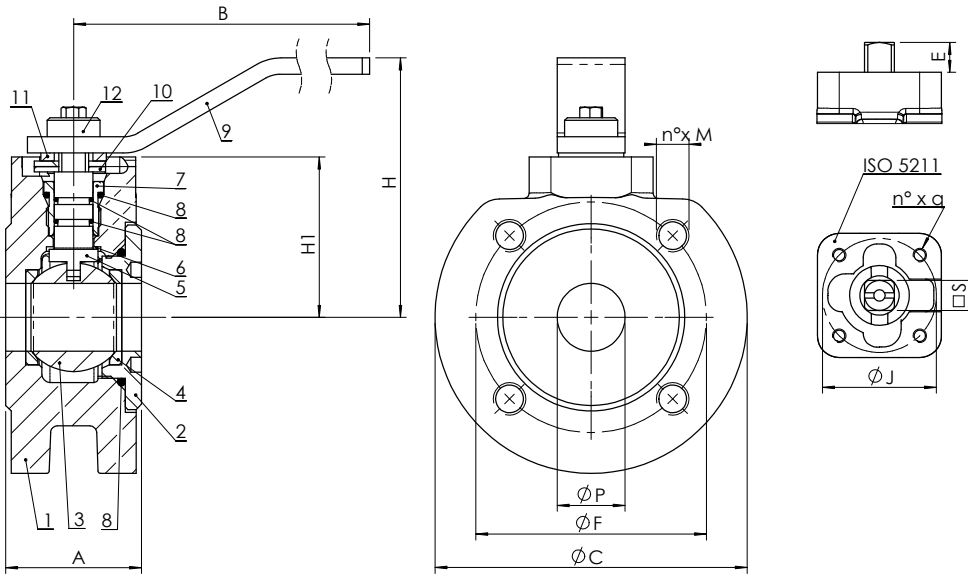


KFC

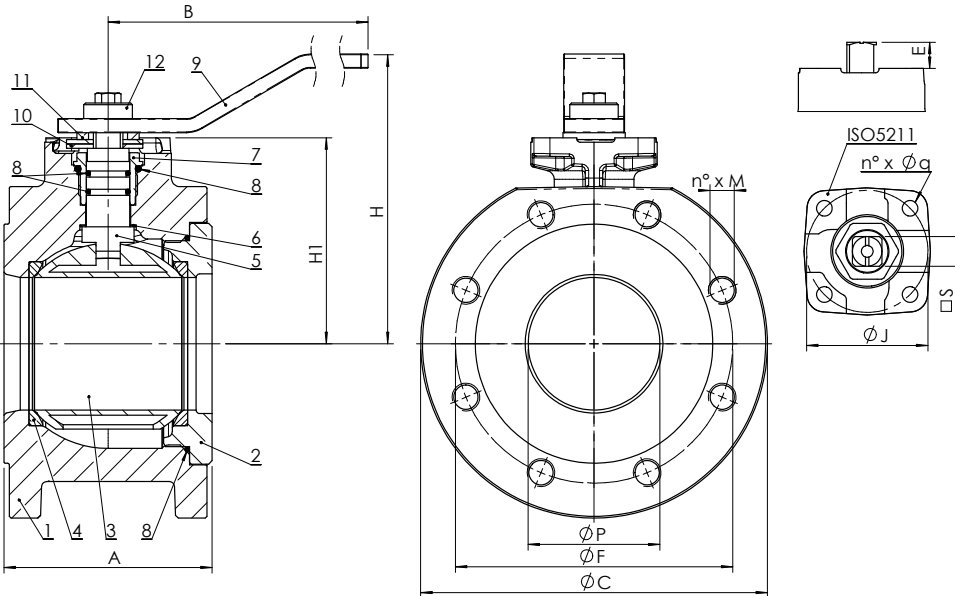
限位开关和开关位置指示装置 (DN40-100)

Kit limit switches for ON/OFF position indicator (DN40-100)

B1 DN20 - 32



B1 DN40 - 100



尺寸 (mm) / Dimensions (mm)

DN		20	25	32	40	50	65	80	100
P		20	25	32	40	50	63	76	95
A	非标准 - not standardized	40	50	55	65	80	100	120	130
H		83	96	101	125	133	142	166	181
H1		52	59	64	78.5	87	95	118	132.5
B		160	170	170	230	230	230	280	360
C		105	115	140	150	165	185	200	220
n° x M		4x M12	4x M12	4x M16	4x M16	4x M16	4x M16	8x M16	8x M16
F		75	85	100	110	125	145	160	180
ISO 5211		F03	F04	F04	F05	F05	F05	F07	F07
J		36	42	42	50	50	50	70	70
n° x q		4x M5	4x M5	4x M5	4x7	4x7	4x7	4x9	4x9
E		9.5	11	11	13.5	13.5	13.5	15	15
S		9	11	11	14	14	14	17	17

重量 (kg) / Weight (kg)

B1.000	1.9	2.54	3.6	5.1	6.4	8.8	11.5	14.8
B1.010 - B1.011	1.9	2.54	3.6	5.4	7.1	10.5	12.7	18.5

扭矩 (Nm) / Operating torque (Nm)

DN	20	25	32	40	50	65	80	100
Nm	15	18	18	18	20	40	70	100

注意：请将扭矩数值乘以1.5倍作为选择驱动装置的依据。

N.B: In order to choose the right actuator, we recommend multiplying the operating torque figure by a safety coefficient, $K=1.5$

材质 / Materials

	组件 - Component	材质 - Material	
1	阀体 - Body	铸铁 - Cast iron EN GJL 250	
2	法兰 - Ring nut	铸铁 - Cast iron EN GJL 250	
3	球阀 - Ball	镀铬黄铜 CuZn40Pb2 Brass CuZn40Pb2 chrome plated	不锈钢 AISI 304 - Stainless steel AISI304
4	球座 - Ball seat	加强型 PTFE - Carbon + Reinforced PTFE	
5	阀杆 - Stem	黄铜 CuZn40Pb2 Brass CuZn40Pb2	不锈钢 AISI 304 - Stainless steel AISI304
6	滑动垫圈 - Sliding washer	PTFE	
7	圆环 - Ring	黄铜 CuZn40Pb2 Brass CuZn40Pb2	不锈钢 AISI 304 - Stainless steel AISI304
8	O型圈 - O-ring	NBR	FKM (Viton®)
9	手柄 - Handle	环氧树脂涂层碳钢 - Carbon steel epoxy coated	
10	定位板 - Stop plate	镀锌碳钢 - Carbon steel Galvanized	
11	卡簧 - Spring washer	镀锌碳钢 - Carbon steel Galvanized	
12	隔圈 - Spacer	黄铜 CuZn40Pb2 - Brass CuZn40Pb2	

最大工作压力 / Maximum pressure

介质* Fluids*	安装位置 Mounting	
	法兰中间 BETWEEN FLANGES	管路末端 END OF LINE
危险性气体 G1 Hazardous gases G1	NO	NO
危险性液体 L1 Hazardous liquids L1	16 bar	10 bar
非危险性气体 G2 Non hazardous gases G2	16 bar	10 bar
非危险性液体 G2 Non hazardous liquids G2	16 bar	10 bar
水** Water**	16 bar	16 bar

* 危险性气体、液体的认证以 2014/68/EU e 1272/2008 (CLP) 标准为准

** 是指供水和排水系统的水 (PED 2014/68/EU 1.12b)

* hazardous gas, liquids acc. 2014/68/EU e 1272/2008 (CLP)

** For supply, distribution and discharge of water (PED 2014/68/EU 1.12b)

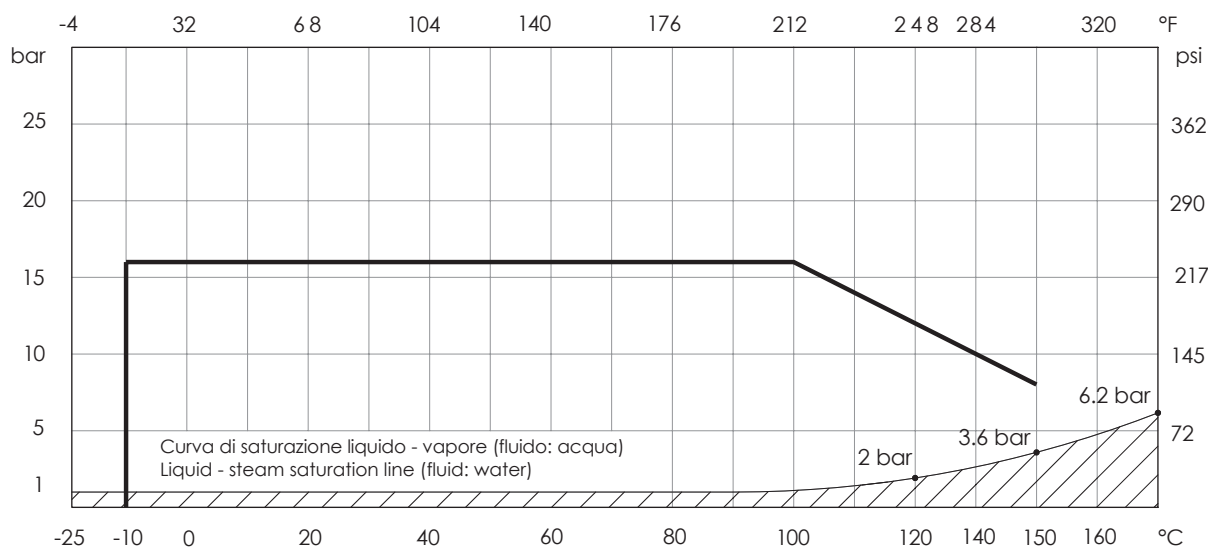
工作温度 / Temperature (°C)

温度 Temperature	最低 min	最高 max			
		长期 continuous		短时 peak	
		L1	G2,L2	L1	G2,L2
NBR	-10	100	100	-	110
FKM (Viton®)	-10	100	150	-	170

注意：温度上升时最大工作压力会有所下降；详情请参考压力温度曲线 G1、L1、G2、L2：见左侧表格

NB: the maximum working pressure decreases while the temperature increases; please refer to "pressure/temperature" chart G1, L1, G2, L2: see chart to side

压力温度曲线 - Pressure/temperature chart

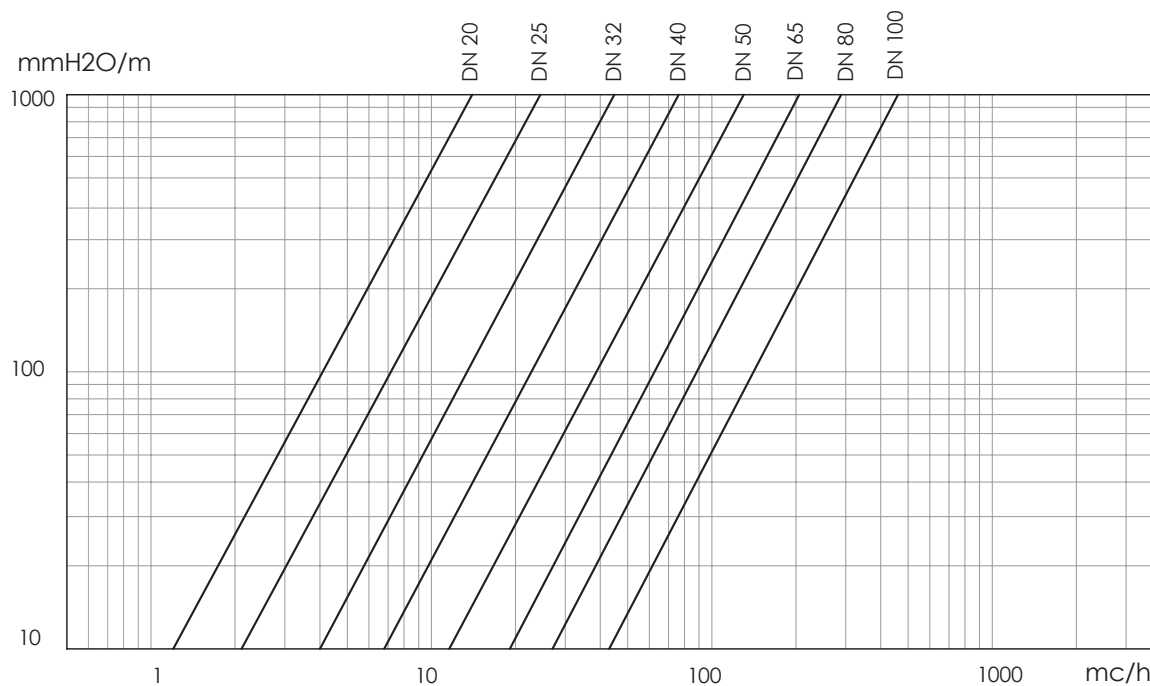


不适用于蒸汽系统。当工作温度和压力处于饱和蒸汽压曲线（阴影区域）下方时，请勿使用该阀门。

RANGE NOT SUITABLE FOR STEAM. DO NOT use when temperature and pressure are below the liquid-steam saturation line (hatched area)



水头损失 介质：水 (1m H₂O = 0,098bar) / Head loss Fluid: water (1m H₂O = 0,098bar)



Kv - DN 表 / Kv - DN chart

DN	20	25	32	40	50	65	80	100
Kv	47.7	83.5	150.4	255	435	672	947	1'508