

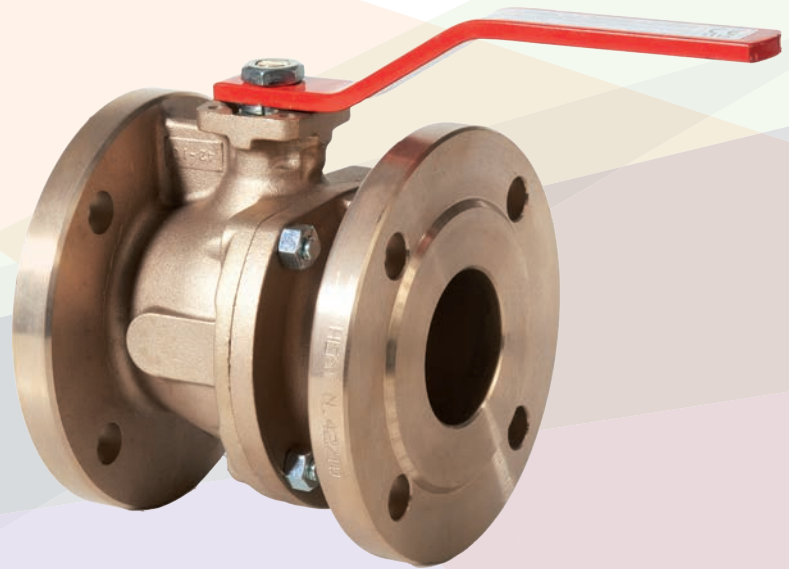
B2.3系列

法兰式青铜球阀

Flanged bronze ball valve



DOWNLOAD
DATASHEET



b-Smart, Be-Brandoni



brandoni
VALVES

www.brandonivalves.com

法兰式青铜球阀 / Flanged bronze ball valve

B2.3系列两片式法兰球阀，阀体材质为青铜，球体为浮球，严格按照相关产品质量标准生产，符合 EN ISO 9001 标准。

该系列还有以下类型：

B2 > 结构长符合EN 558-1标准，全口径

R2 > 结构长符合ANSI B16.10#150标准，缩径

S2 > 结构长符合ANSI B16.10#150标准，全口径

适用于海上供暖和空调系统，集中供热、供水和水处理，工业和化工、农业系统，介质可以是压缩空气、油类及碳氢化合物。

(请确保您的选择与适用范围一致)

YES: 可安装于管路中部及末端，可频繁开启，上法兰符合 ISO 5211标准，可连接多种驱动器。

B2系列球阀为全口径，可有效减少流体扰动和水头损失。

NO: 不适用于蒸汽系统及流量调节。

附件

- 隔热延长杆
- 用于给水总管系统的连接方头
- 阀杆延长装置
- 手柄锁定装置
- 限位开关和开关位置指示装置
- ISO 5211标准法兰连接装置

驱动器

- 气动执行器：单作用/双作用
- 可定制：限位开关，位置指示器
- 电动执行器
- 齿轮箱
- 链条驱动齿轮箱

认证 / Certifications



符合2014/68/UE (ex 97/23/CE PED) 标准

结构及检测标准：

法兰标准：EN 1092 ISO 7005, ANSI B16.5 #150

设计标准：EN 1983, EN12516, ISO 5211

标识标准：EN19

检测标准：EN 12266 cat. A (ISO 5208 cat. A)

Series B2.3 valves are split-body-type, shut-off ball valves in bronze and floating ball, manufactured in accordance with the relevant product standards and quality management of ISO 9001.

This series is available also:

B2 > with face to face, in accordance with EN 558-1 full bore

R2 > with face to face, in accordance with ANSI B16.10#150 short pattern reduced bore

S2 > with face to face, in accordance with ANSI B16.10#150 short pattern full bore

Suitable for naval, Offshore and seawater applications, heating and conditioning (HVAC), district heating, distribution and treatment of water, industrial and chemical applications, agricultural applications, for compressed air processing, oils and hydrocarbons.

(Please ensure the choice of the corresponding item)

YES: for installation in-line and end of line, for services with frequent acting, the integrated ISO 5211 support allows the installation of a wide range of actuators.

The B2 range of ball valves of full and straight bores, reduce turbulences and minimize head loss.

NO: for steam, for choking and regulation of the flow.

Accessories

- Stem extension for thermal insulation
- Square cap for water main system connection
- Stem extension
- Kit lockable operation lever
- Kit limit switches for ON/OFF position indicator
- KIT ISO 5211 flange

Actuators

- Double acting and single acting pneumatic actuators
- On request: limit switches, position indicator
- Electric actuators
- Gear boxes
- Chain driven operated gear boxes

In conformity with directive 2014/68/UE (ex 97/23/CE PED)

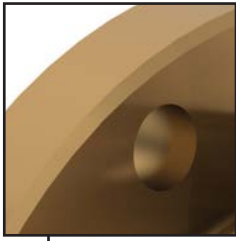
Design and testing standards (correspondences):

Flanges: EN 1092 ISO 7005, ANSI B16.5 #150

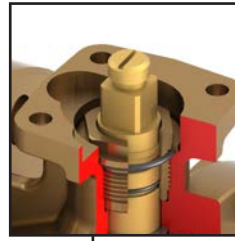
Design: EN 1983, EN12516, ISO 5211

Marking: EN19

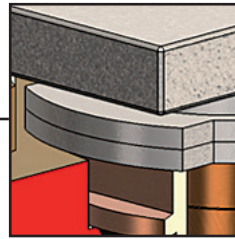
Testing: 100% testing in accordance with EN 12266 cat. A (ISO 5208 cat. A)



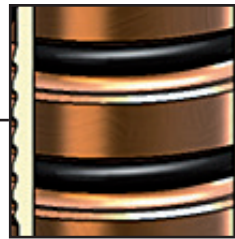
所有规格均有EN558/1或ANSI B 16.10 class 150短型两种结构长。
Face to face, in accordance with EN558/1 or ANSI B 16.10 class 150 short pattern for all DN (diameters).



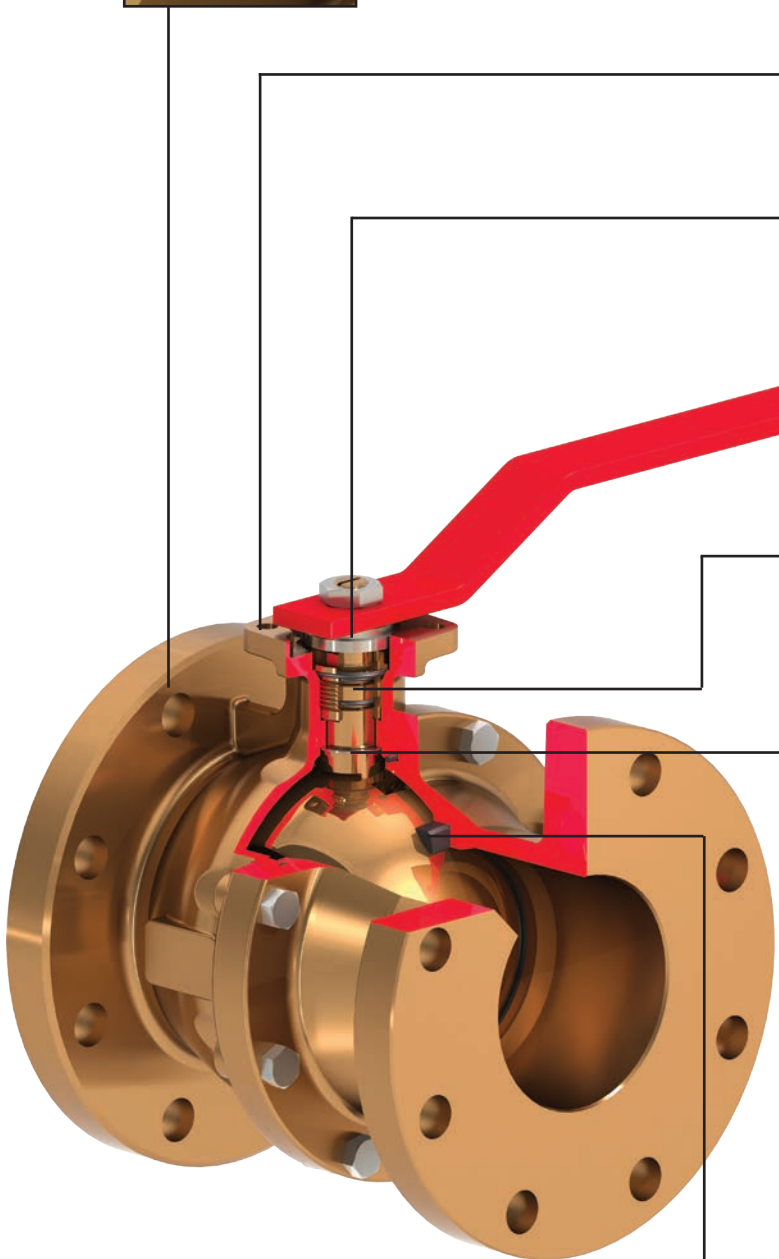
ISO 5211标准上法兰。
Integrated flange, in accordance with ISO 5211.



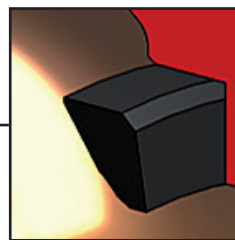
旋转90度重置该定位板可以锁定阀门在开或关的位置。
Removing and repositioning of the plate at 90° allows locking of the lever in ON-OFF position.



阀杆处的双O型圈动态密封确保阀门在严苛的工作条件下也能正常工作。
The dynamic seal of the stem is guaranteed by a double O-ring, even in severe working conditions.



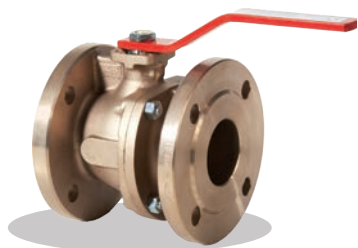
防脱出阀杆。
可按客户要求定制防静电装置 (EN17292)
Blow-out proof stem.
On request antistatic device (EN17292)



加强型PTFE密封座，可确保温度改变时扭矩恒定。
Seat of ball in reinforced PTFE, as temperature changes, the torque remains constant.

法兰式青铜球阀 / Flanged bronze ball valve

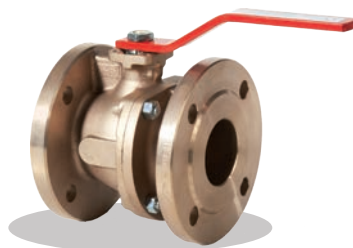
结构长符合 / Face to face EN 558/1 - 14*



B2.300

阀体: 青铜
 阀球: 黄铜
 阀杆: 黄铜
 O型圈: FKM
 工作温度: -10 + 150°C

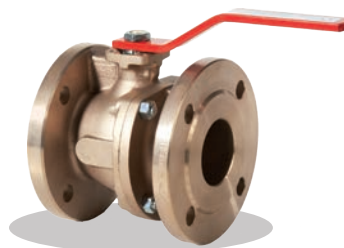
Body: Bronze
 Ball: Brass
 Stem: Brass
 O-ring: FKM
 Temp: -10 +150°C



B2.322

阀体: 青铜
 阀球: AISI 316
 阀杆: AISI 316
 O型圈: FKM
 工作温度: -10 + 150°C

Body: Bronze
 Ball: AISI 316
 Stem: AISI 316
 O-ring: FKM
 Temp: -10 +150°C



B2.377

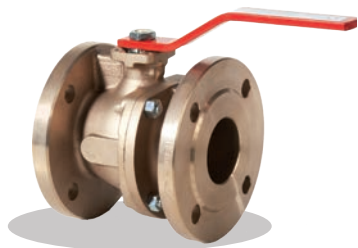
阀体: 青铜
 阀球: 铝青铜
 阀杆: 铝青铜
 O型圈: FKM
 工作温度: -10 + 150°C

Body: Bronze
 Ball: Aluminium-bronze
 Stem: Aluminium-bronze
 O-ring: FKM
 Temp: -10 +150°C

*法兰标准: PN16, ANSI 150
 *Flanges: PN 16, ANSI 150

结构长符合 / Face to face ANSI B16.10#150标准 - 缩径 / reduced bore**

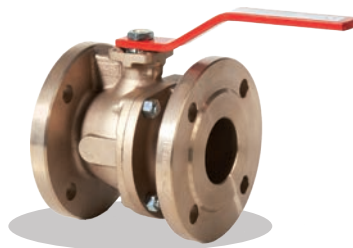
结构长符合 / Face to face ANSI B16.10#150标准 - 全通径 / full bore**



S2.300

阀体: 青铜
 阀球: 黄铜
 阀杆: 黄铜
 O型圈: FKM
 工作温度: -10 + 150°C

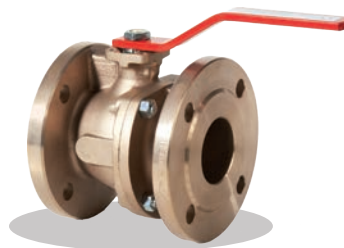
Body: Bronze
 Ball: Brass
 Stem: Brass
 O-ring: FKM
 Temp: -10 +150°C



S2.322

阀体: 青铜
 阀球: AISI 316
 阀杆: AISI 316
 O型圈: FKM
 工作温度: -10 + 150°C

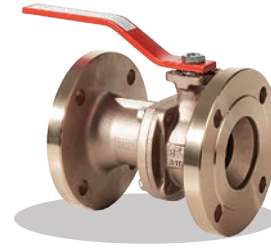
Body: Bronze
 Ball: AISI 316
 Stem: AISI 316
 O-ring: FKM
 Temp: -10 +150°C



S2.377

阀体: 青铜
 阀球: 铝青铜
 阀杆: 铝青铜
 O型圈: FKM
 工作温度: -10 + 150°C

Body: Bronze
 Ball: Aluminium-bronze
 Stem: Aluminium-bronze
 O-ring: FKM
 Temp: -10 +150°C



R2.377

阀体: 青铜
 阀球: 铝青铜
 阀杆: 铝青铜
 O型圈: FKM
 工作温度: -10 + 150°C

Body: Bronze
 Ball: Aluminium-bronze
 Stem: Aluminium-bronze
 O-ring: FKM
 Temp: -10 +150°C

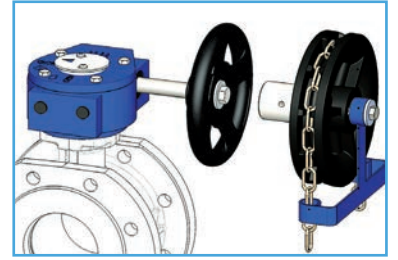
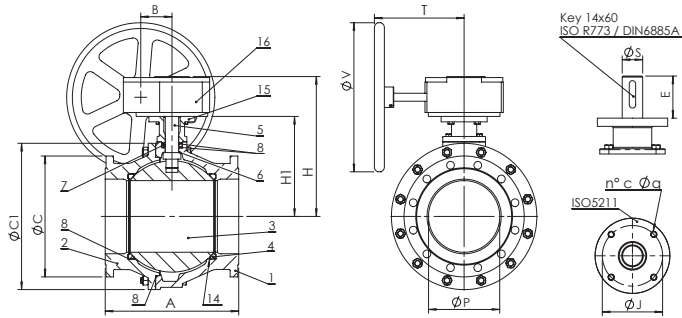
**法兰标准: ANSI 150
 **Flanges: ANSI 150

驱动器和附件 / Actuators and accessories



B2.3-S2.3 + RM

齿轮箱
Gear box



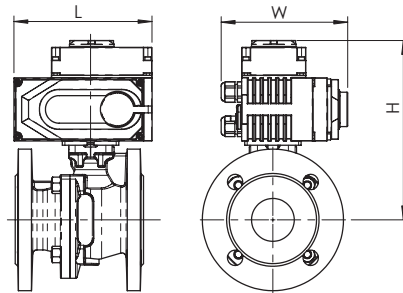
KCAT 链条驱动装置 Chain driver kit

DN	15	20	25	32	40	50	65	80	100	125	150	200	250
B2/S2 + RM	RM.0250	RM.0250	RM.0250	RM.0250	RM.0250	RM.0250	RM.0250	RM.0250	RM.0250	RM.0750	RM.0750	RM.1200	RM.1200
L	130	130	130	130	130	130	130	130	130	180	180	205	256
U	77	77	77	77	77	77	77	77	77	104	104	124	101
H	112.5	114	121	126	140.5	149	157	180	194.5	243	260.5	310	448
W	225	225	225	225	225	225	225	225	225	338	338	345	464
G	170	170	170	170	170	170	170	170	170	260	260	260	360
V	150	150	150	150	150	150	150	150	150	300	300	300	500
重量 / Weight Kg	6.9	7.6	8.5	10.1	11.8	13.3	14.8	19.8	22.8	38.3	48.8	105.3	192.3



B2.3-S2.3 + AOX

电动执行器
Electric actuators

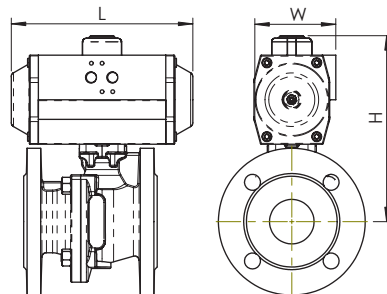


DN	15	20	25	32	40	50	65	80	100	125	150	200
B2/S2 + AOX	003	003	003	003	005	005	008	015	015	030	040	100
L	123	123	123	123	160	160	160	189	189	268	268	268
H	164	165	172	177	200	208	216	247	262	329	347	394
W	100	100	100	100	121	121	121	145	145	225	225	225
重量 / Weight Kg	4.7	5.4	6.3	7.9	11.1	12.6	14.1	20.1	23.1	41.4	52.3	107.5



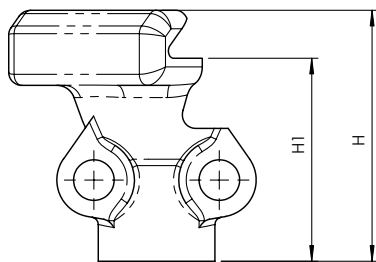
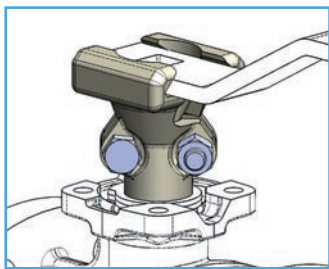
B2.3-S2.3 + AP

气动执行器
Pneumatic actuator



DN	15	20	25	32	40	50	65	80	100	125	150	200	250
B2/S2 + AP DE - DA	AP2	AP2	AP2	AP2	AP3	AP3	AP3	AP4	AP4	AP5	AP5.5	AP8	AP10
L	155	155	155	155	213	213	213	276	276	366	388	563	750
H	153.5	155	162	167	199	207	215	263	278	350	389	530	720
W	73	73	73	73	85	85	85	110	110	140	160	215	290
重量 / Weight Kg	4.02	4.72	5.62	7.22	10.04	11.54	13.04	20.6	23.6	38.1	52.44	129.6	257
B2/S2 + AP SE 弹簧复位 - SPRING RETURN	AP3S	AP3S	AP3.5S	AP3.5S	AP3.5S	AP3.5S	AP4S	AP4.5S	AP5.5S	AP6S	AP8S	AP10S	-
L	213	213	236	236	236	236	276	310	388	468	563	750	-
H	210.5	212	229	234	259	267	290	350	399	455	543	575	-
W	85	85	98	98	98	98	110	128	160	175	215	290	-
重量 / Weight Kg	5.7	6.4	8.5	10.1	11.8	13.3	16.7	25.17	35.59	51.86	83.32	194	-

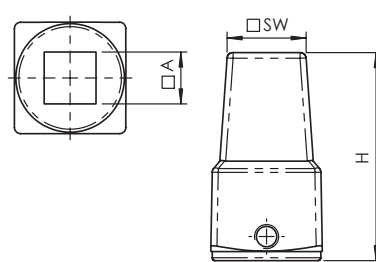
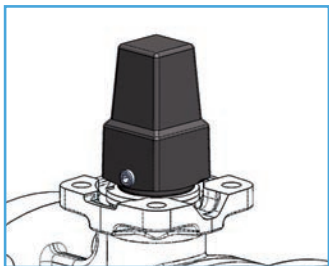
驱动器和附件 / Actuators and accessories



DN	25-32-40-50-65	80-100-125-150
H	68	68
H1	55	55

KITB2

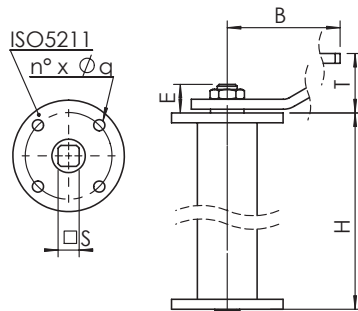
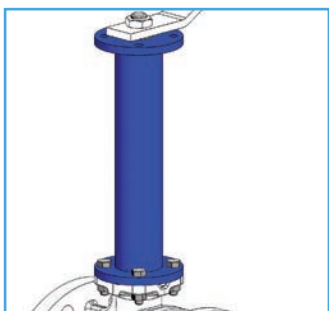
隔热延长杆 / Stem extension for thermal insulation



DN	40-50-65	80-100	125-150
SW	26	26	26
A	14	17	22
H	69	69	71

KCAPB2

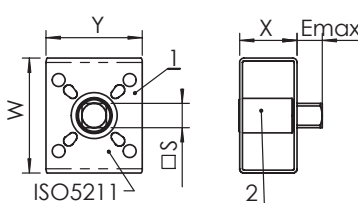
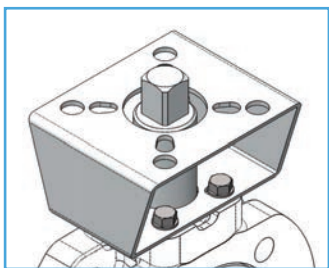
用于给水总管系统的连接方头 / Square cap for water main system connection



DN	40	50	65	80	100	125	150
H	250-500-800-1000						
T	48	48	48	48	48	59	59
B	230	230	230	280	360	450	560
ISO 5211	F05	F05	F05	F07	F07	F10	F10
J	50	50	50	70	70	102	102
n° x Ø q	4x7	4x7	4x7	4x9	4x9	4x11	4x11
E	22	22	22	23	23	27	27
S	14	14	14	17	17	22	22

KPRB

用于连接给水总管系统的阀杆延长装置 / Stem extension for water main system connection

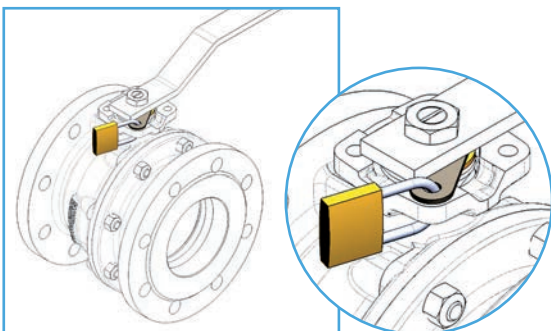


- 1) 支架 / Bracket
- 2) 接头 / Joint

DN	15-20	25-32	40-50-65	80	100	125	150
ISO 5211'	F04-05-07	F04-05-07	F05-07	F10-12	F10-12	F10-12	F10-12-14
S x E	14 x 14	17 x 17	17 x 17	22 x 22	27 X 27	27 X 27	36 X 36
S1 x E1''	11 x 11	11 x 11	-	-	-	-	-
钻孔侧 Drilling valve side	F03-04	F03-04	F05-07	F07-10	F07-10	F07-10	F10-12-14
X	40	40	50	60	60	60	80
Y	70	70	70	120	120	120	140
W	80	80	100	120	120	120	160

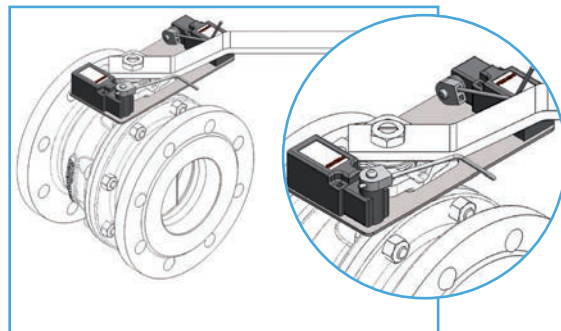
KISO.B2

ISO 5211标准法兰连接装置 / Kit ISO 5211 flange



手柄锁定装置

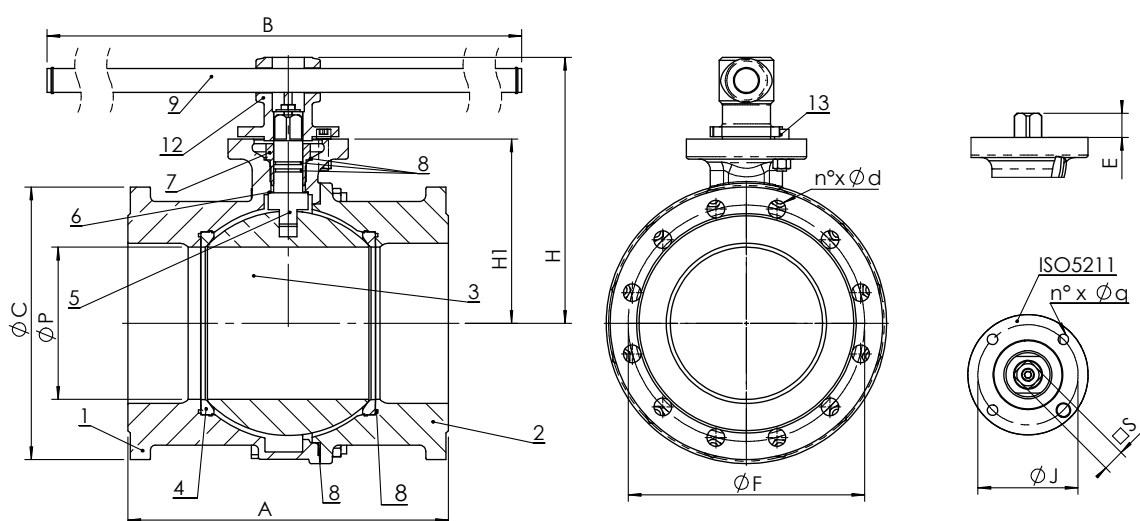
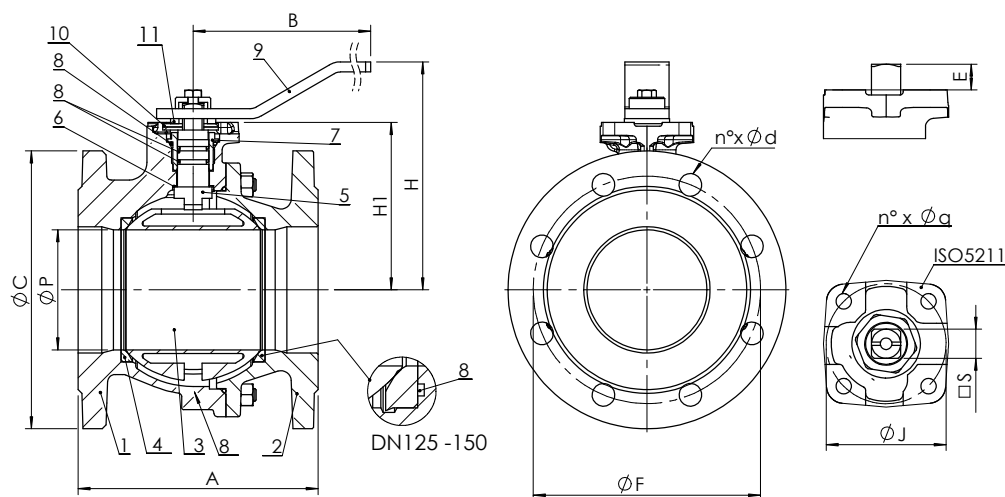
Kit lockable operation lever



KFC

限位开关和开关位置指示装置

Kit limit switches for ON/OFF position indicator



B2.3 - 尺寸 (mm) / Dimensions (mm)

DN		15	20	25	32	40	50	65	80	100	125	150	200	250
P		15	20	25	32	40	50	63	76	95	120	145	190	240
A	EN 558/1 - 14 (ex DIN 3202 F4)	115	120	125	130	140	150	170	180	190	200	210	-	-
A	EN 558/1 - 14 (ex DIN 3202 F5)	-	-	-	-	-	-	-	-	-	-	-	400	450
H		84	84	96	101	125	135	143	165	180	225	243	320	-
H1		50,5	52	59	64	78,5	87	95	118	132,5	165	182,5	230	355
B		160	160	170	170	230	230	230	280	360	520	520	1'000	101
ISO 5211		F04	F04	F04	F04	F05	F05	F05	F07	F07	F10	F10	F12	F12
J		42	42	42	42	50	50	50	70	70	102	102	125	125
n° x Øq		4 x 6	4 x 6	4 x 6	4 x 6	4 x 7	4 x 7	4 x 7	4 x 9	4 x 9	4 x 11	4 x 11	4 x 13	4 x 13
E		9,5	9,5	11	11	13,5	13,5	13,5	15	15	21	21	27	92
S		□ 9	□ 9	□ 11	□ 11	□ 14	□ 14	□ 14	□ 17	□ 17	□ 22	□ 22	□ 27	Φ 45

法兰尺寸符合EN 1092 PN16标准 - Flanges dimensions EN 1092 PN16

C		95	105	115	140	150	165	185	200	220	250	285	340	405
F		65	75	85	100	110	125	145	160	180	210	240	295	355
n° x Fd		4 x 14	4 x 14	4 x 14	4 x 18	4 x 18	4 x 18	4 x 18	8 x 18	8 x 18	8 x 18	8 x 22	12 x 22	12 x 26

法兰尺寸符合ANSI B16.5#150标准 - Flanges dimensions ANSI B16.5#150

C		88,9	98,6	108	117,3	127	152,4	177,8	190,5	228,6	254	279,4	-	-
F		60,5	69,9	79,2	88,9	98,6	120,7	139,7	152,4	190,5	215,9	241,5	298,5	362
n° x Ød		4 x 16	4 x 16	4 x 16	4 x 16	4 x 16	4 x 19	4 x 19	4 x 19	8 x 19	8 x 22	8 x 22	8 x 22	12 x 26

B2.3 - 重量 (kg) / Weight (kg)

B2.300		2,8	3,4	4,8	5,6	7,9	10,5	15,1	19,1	24,0	36,7	44,6	104,0	120,0
B2.322		2,8	3,4	4,8	6,5	9,3	11,5	16,0	20,6	28,4	41,2	51,7	131,0	140,0

B2.3 - 扭矩 (Nm) / Operating torque (Nm)

Nm		15	15	18	18	18	20	40	70	100	180	250	600	2'000
----	--	----	----	----	----	----	----	----	----	-----	-----	-----	-----	-------

注意：请将扭矩数值乘以15倍作为选择驱动装置的依据。

N.B.: In order to choose the right actuator, we recommend multiplying the operating torque figure by a safety coefficient, K=1.5

法兰式青铜球阀 / Flanged bronze ball valve

B2.3 - 钻孔 / Drilling

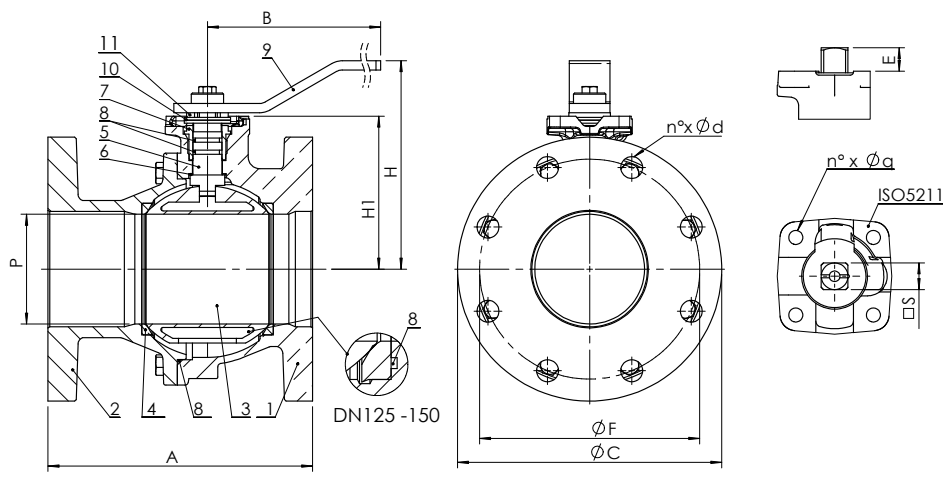
条目/item	DN	15	20	25	32	40	50	65	80	100	125	150	200	250
B2.3...16CV 法兰尺寸符合PN 16 EN1092/3 标准 Dimensions of flanges according to PN 16 EN1092/3	钻孔符合PN 16 EN1092/1标准 Drilling PN 16 EN1092/1	std	std	std	std	std	std	std	std	std	std	std	std	std
	钻孔符合PN 10 EN1092/1标准 Drilling PN 10 EN1092/1	=	=	=	=	=	=	=	=	=	=	=	opt	opt
	钻孔符合PN 6 EN1092/1标准 Drilling PN 6 EN1092/1	opt	opt	opt	opt	opt	opt	opt	opt	opt	opt	opt (1)	opt	opt
	钻孔符合PN 25 EN1092/1标准 Drilling PN 25 EN1092/1	=	=	=	=	=	=	opt	=	no	no	no	no	no
B2.3...A1CV 法兰尺寸符合ANSI B16.5#150 标准 Dimensions of flanges according to ANSI B16.5#150	钻孔符合ANSI B16.5 #150标准 Drilling ANSI B16.5 #150	std	std	std	std	std	std	std	std	std	std	std	-	-

std: 标准/opt: 可按客户要求生产 / =: 与PN16相同

std: standard / opt: option on request / =: same as PN16

(1) 螺纹孔 / Threaded hole

S2.3



S2.3 - 尺寸 (mm) / Dimensions (mm)

DN		15	20	25	32	40	50	65	80	100	150
P		15	20	25	32	40	50	63	76	95	145
A	ANSI B16.10 #150 短型/Short Pattern	108	117	127	140	165	178	190	203	229	267
H		84	84	96	101	125	135	143	165	180	243
H1		50,5	52	59	64	78,5	87	95	118	132,5	182,5
B		160	160	170	170	230	230	230	280	360	520
ISO 5211		F04	F04	F04	F04	F05	F05	F05	F07	F07	F10
J		42	42	42	42	50	50	50	70	70	102
n° x Øq		4 x 6	4 x 6	4 x 6	4 x 6	4 x 7	4 x 7	4 x 7	4 x 9	4 x 9	4 x 11
E		9,5	9,5	11	11	13,5	13,5	13,5	15	15	21
S		□ 9	□ 9	□ 11	□ 11	□ 14	□ 14	□ 14	□ 17	□ 17	□ 22

法兰尺寸符合 ANSI B16.10#150标准 - Flanges dimensions ANSI B16.10#150

		15	20	25	32	40	50	65	80	100	150
C		88,9	98,6	108	117,3	127	152,4	177,8	190,5	228,6	279,4
F		60,5	69,9	79,2	88,9	98,6	120,7	139,7	152,4	190,5	241,5
n° x Ød		4 x 16	4 x 16	4 x 16	4 x 16	4 x 16	4 x 19	4 x 19	4 x 19	8 x 19	8 x 22

S2.3 - 重量 (kg) / Weight (kg)

		15	20	25	32	40	50	65	80	100	150
S2.300		2,1	2,7	4,1	4,9	7,1	9,8	13,9	18	25,7	47,2
S2.322		2,4	3,1	4,7	5,72	8,1	11,3	16	20,8	29,5	56,8

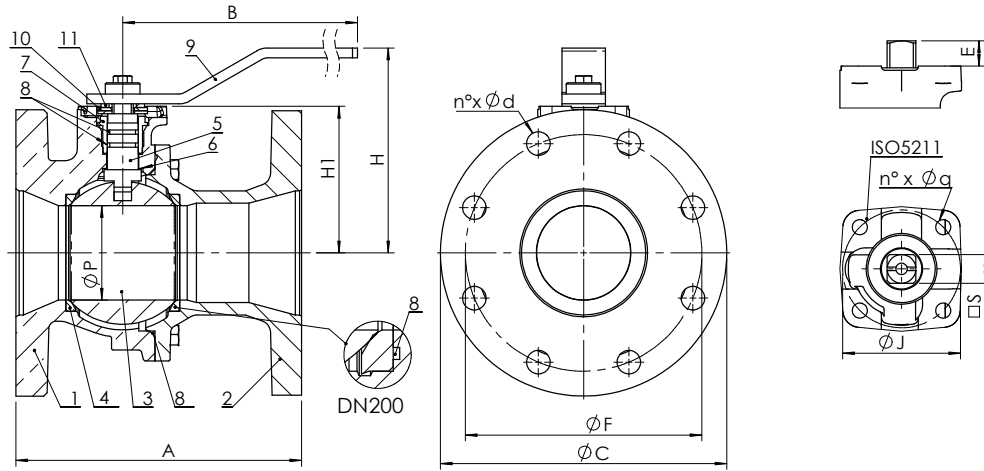
S2.3 - 扭矩 (Nm) / Operating torque (Nm)

Nm		15	20	25	32	40	50	65	80	100	150
		15	15	18	18	18	20	40	70	100	250

注意: 请将扭矩数值乘以1.5倍作为选择驱动装置的依据。

N.B.: In order to choose the right actuator, we recommend multiplying the operating torque figure by a safety coefficient, K=1.5

R2.3



R2.3 - 尺寸 (mm) / Dimensions (mm)

DN		50	80	100	150	200
P		40	50	76	95	145
A	ANSI B16.10 #150 短型/Short Pattern	178	203	229	267	292
H		125	135	165	180	243
H1		78,5	87	118	132,5	182,5
B		230	230	280	360	520
ISO 5211		F05	F05	F07	F07	F10
J		50	50	70	70	102
n° x Fq		4 x 7	4 x 7	4 x 9	4 x 9	4 x 11
E		17,5	17,5	20	20	21
S		□ 14	□ 14	□ 17	□ 17	□ 22
法兰尺寸符合 ANSI B16.10#150标准 - Flanges dimensions ANSI B16.10#150						
C		152,4	190,5	228,6	279,4	349,2
F		120,7	152,4	190,5	241,5	298,5
n° x Ød		4 x 19	4 x 19	8 x 19	8 x 22	8 x 22

R2.3 - 重量 (kg) / Weight (kg)

R2.377		9,4	15,5	24,8	36,2	76,0
--------	--	-----	------	------	------	------

R2.3 - 扭矩 (Nm) / Operating torque (Nm)

Nm		18	20	70	100	250
----	--	----	----	----	-----	-----

注意：请将扭矩数值乘以1.5倍作为选择驱动装置的依据。

N.B.: In order to choose the right actuator, we recommend multiplying the operating torque figure by a safety coefficient, K=1.5

材质 / Materials

	组件 / Component	材质 / Material		
		B2.300 / S2.300	B2.322 / S2.322	B2.377 / S2.377 / R2.377
1	阀体/Body	青铜 / Bronze C83600 ASTM B62 (equiv. CuSn5Zn5Pb5 CC491K EN1982)		
2	法兰/Flange	青铜 / Bronze C83600 ASTM B62 (equiv. CuSn5Zn5Pb5 CC491K EN1982)		
3	DN15-50 球阀/Ball DN15-50	黄铜 / Brass CuZn40Pb2	不锈钢 / Stainless steel AISI316	铝青铜 / Alu bronze CuAl10Ni5Fe5
	DN65-250 球阀/Ball DN65-250	黄铜 / Brass CuZn40Pb2	不锈钢 / Stainless steel AISI316	铝青铜 / Alu bronze C95800 ASTM B148
4	球座/Ball seat	加强型PTFE / Carbon reinforced PTFE	加强型PTFE / Carbon reinforced PTFE	加强型PTFE / Carbon reinforced PTFE
5	阀杆/Stem	黄铜 / Brass CuZn40Pb2	不锈钢 / Stainless steel AISI316	铝青铜 / Alu bronze CuAl10Ni5Fe4
6	滑动垫圈/Sliding Ring	PTFE		
7	圆环/Ring nut	黄铜 / Brass CuZn40Pb2	不锈钢 / Stainless steel AISI316	铝青铜 / Alu bronze CuAl10Ni5Fe4
8	O型圈/O Ring	FKM (Viton®)		
9	手柄/Handle	环氧树脂涂层碳钢 / Carbon steel epoxy coated / AISI316		
10	定位板/Stop plate	镀锌碳钢/Carbon steel galvanized / AISI316		
11	卡簧/Spring washer	镀锌碳钢/Carbon steel galvanized / AISI316		
12	手柄连接块/Handle support (DN200)	黄铜 / Brass CuZn40Pb2		
13	限位开关 /Handle stop (DN200)	镀锌碳钢/Carbon steel galvanized / AISI316		
14	防脱环/Retaing ring (DN250)	不锈钢 / Stainless steel AISI302		
15	齿轮箱轴承/Gear box bearing (DN250)	铝青铜 / Aluminium bronze CuAL10Ni5Fe5		
16	齿轮箱/Gear box (DN250)	镀锌碳钢 / Carbon steel galvanized / AISI316		
	螺母和螺栓/Nuts and bolts	-		

1: 可按客户要求定制AISI316不锈钢材质
1: AISI 316 stainless steel on request

最大工作压力 / Maximum pressure

介质* Fluids*	安装位置 Mounting	
	法兰中间 BETWEEN FLANGES	管路末端 END OF LINE
危险性气体 G1 Hazardous gases G1	NO	NO
危险性液体 L1 Hazardous liquids L1	16 bar DN15-200 10 bar DN250	10 bar
非危险性气体 G2 Non hazardous gases G2	16 bar DN15-200 10 bar DN250	10 bar
非危险性液体 G2 Non hazardous liquids G2	16 bar	10 bar
水** Water**	16 bar	16 bar

* 危险性气体、液体的认证以 2014/68/EU e 1272/2008 (CLP) 标准为准

** 是指供水和排水系统的水 (PED 2014/68/EU 1.1.2b)

* hazardous gas, liquids acc. 2014/68/EU e 1272/2008 (CLP)

** For supply, distribution and discharge of water (PED 2014/68/EU 1.1.2b)

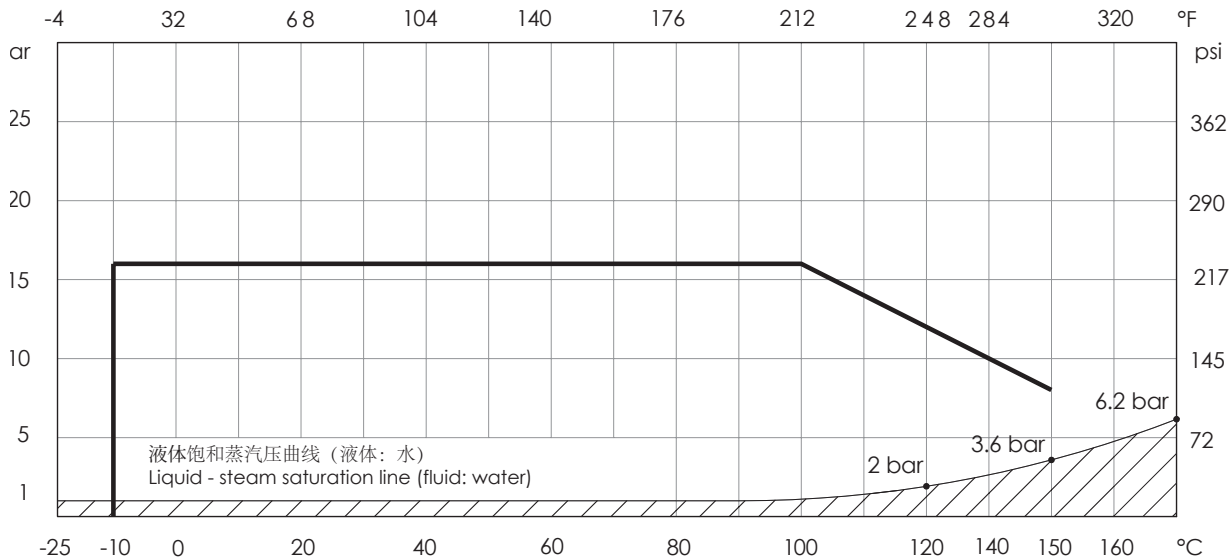
工作温度 / Temperature (°C)

温度 Temperature	最低 min	最高 Max	
		长期 continuous	短时 peak
FKM (Viton®)	-10	150	170

注意：温度上升时最大工作压力会有所下降；详情请参考压力温度曲线

NB: the maximum working pressure decreases while the temperature increases; please refer to "pressure/temperature" chart

压力温度曲线 - Pressure/temperature chart

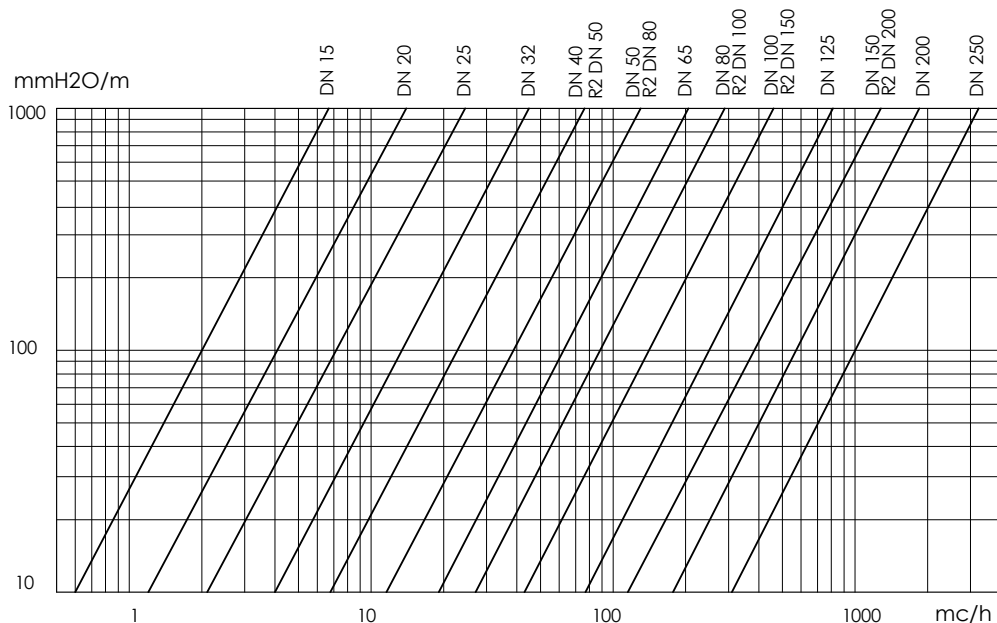


不适用于蒸汽系统。当工作温度和压力处于饱和蒸汽压曲线（阴影区域）下方时，请勿使用该阀门。

RANGE NOT SUITABLE FOR STEAM. DO NOT use when temperature and pressure are below the liquid-steam saturation line (hatched area)



水头损失 介质：水 (1m H₂O = 0.098bar) - Head loss Fluid: water (1m H₂O = 0.098bar)



Kv - DN 表 / Kv - DN chart

DN			15	20	25	32	40	50	65	80	100	125	150	200	250
Kv	B2-S2	mc/h	22.3	47.7	83.5	150.4	255	435	672	947	1'508	2'633	4'261	5'957	10'510
Kv	R2	mc/h						255		435	947		1'508	4'261	