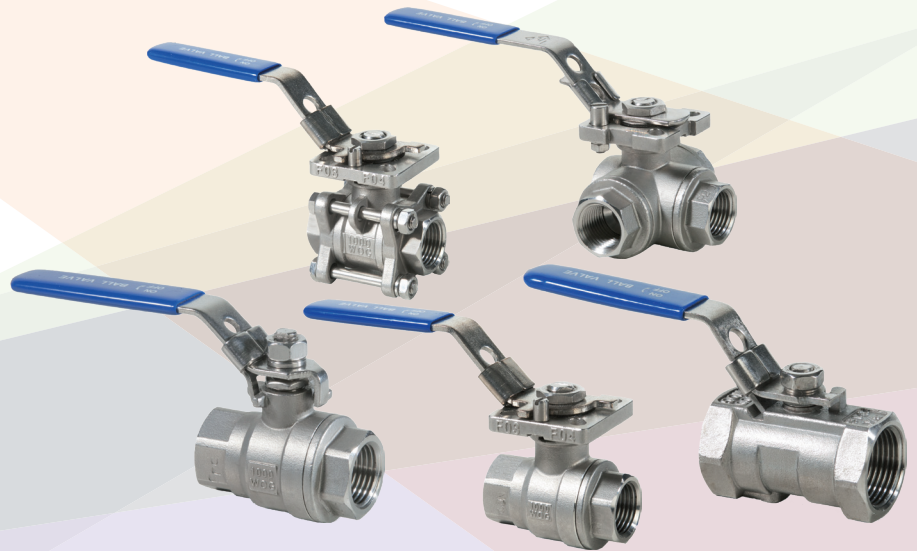


03-04 inox系列



DOWNLOAD
DATASHEET

不锈钢螺纹连接球阀
AISI 316 F/F threaded end ball valves



b-Smart, Be-Brandoni



Brandoni
VALVES

www.brandonivalves.com

不锈钢螺纹连接球阀 / AISI 316 F/F threaded end ball valves

该系列包含双通及三通两种类型，均为螺纹连接，阀体是AISI 316材质，球体为浮球，严格按照相关的产品质量标准生产。可分为以下几类：

A3.622 > 双通，一片式，缩径（无上法兰）。

B3.622 > 双通，两片式，全通径，带或不带ISO 5211上法兰。

C3.622 > 双通，三片式，全通径，带或不带ISO 5211上法兰。

04.622 > 三通，带L型或T型球，带ISO 5211上法兰。

适用于化工、工业、供热和空调系统，集中供热、农业系统，介质可以是油类及碳氢化合物。（请确保您的选择与适用范围一致）

YES: 可频繁开启，可连接手动、电动和气动执行器。

NO: 不适用于蒸汽系统及流量调节。

驱动器

- 气动执行器：单作用/双作用
- 电动执行器
- 齿轮箱

认证 / Certifications



符合2014/68/EU (ex 97/23/CE PED) 标准

结构及检测标准：

螺纹标准：ISO 228-1, BS (BSP).

设计标准：EN12516, ISO 5211

检测标准：EN 12266 cat. A (ISO 5208 cat. A)

This series consists of two and three way, threaded-end shut-off valves, with the body in AISI 316 and a floating ball, manufactured in accordance with the most severe product standards.

They are available in the following versions:

A3.622 > two-way, 1 piece, reduced bore (NB no ISO flange)

B3.622 > two-way, 2 pieces body, full bore, with or without ISO 5211 flange

C3.622 > two-way, 3 pieces body, full bore, with or without ISO 5211 flange

04.622 > three-way, with ball "L"shape or "T"shape, with ISO 5211 flange

Suitable for chemical and industrial plants, for heating and conditioning (HVAC), district heating, agricultural applications, oils and hydrocarbons. (Please ensure the choice of the corresponding item)

YES: for services with frequent actuation; suitable for installing of manual, electric and pneumatic servo commands.

NO: for steam, for choking and regulation of the flow.

Actuators

- Double acting and single acting pneumatic actuators
- Electric actuators
- Gear box

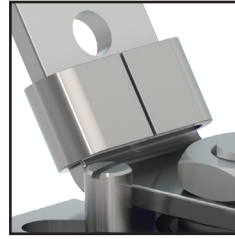
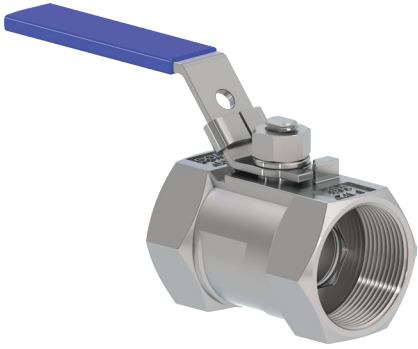
In conformity with directive 2014/68/UE (ex 97/23/CE PED)

Design and testing standards (correspondences):

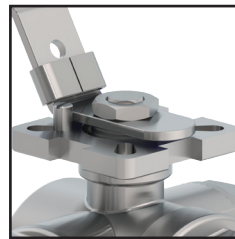
Threading: ISO 228-1, BS (BSP).

Design: EN12516, ISO 5211

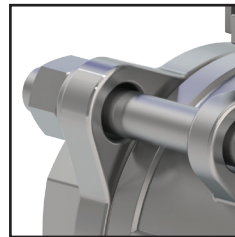
Testing: EN 12266 cat. A (ISO 5208 cat. A)



带有位置锁定装置（防止意外调整）。
Lockable position (against accidental actuation) and padlocking.



ISO 5211标准上法兰。
Integrated ISO 5211 flange.



C3.622系列：拆卸简单。
C3.622: easy dismantling.



04.622系列，带T型或L型球。
 阀杆标记指示流向（已连接端口）。
 4 R-PTFE阀座确保球阀稳定性最佳。
04.622 ball drilled with T o L pattern bore.
Stem marking to show flow direction (connected port).
4 R-PTFE seat assure best ball stability

缩径

Reduced bore



A3.622

阀体: AISI 316
 阀球: AISI 316
 阀杆: AISI 316
 工作温度: -25 + 180 °C

Body: Stainless steel
 Ball: Stainless steel
 Stem: Stainless steel
 Temp: -25 +180 °C

全通径两片式阀体

Full bore 2 pieces body



B3.622

阀体: AISI 316
 阀球: AISI 316
 阀杆: AISI 316
 工作温度: -25 + 180 °C

Body: Stainless steel
 Ball: Stainless steel
 Stem: Stainless steel
 Temp: -25 +180 °C



B3.622 ISO

阀体: AISI 316
 阀球: AISI 316
 阀杆: AISI 316
 带ISO 5211上法兰
 工作温度: -25 + 180 °C

Body: Stainless steel
 Ball: Stainless steel
 Stem: Stainless steel
 With ISO 5211 flange
 Temp: -25 +180 °C

全通径三片式

Full bore 3 pieces body



C3.622 ISO

阀体: AISI 316
 阀球: AISI 316
 阀杆: AISI 316
 带ISO 5211上法兰
 工作温度: -25 + 180 °C

Body: Stainless steel
 Ball: Stainless steel
 Stem: Stainless steel
 With ISO 5211 flange
 Temp: -25 +180 °C

三通缩径

Three-way reduced bore



T4.622 ISO

阀体: AISI 316
 阀球: T型 AISI 316
 阀杆: AISI 316
 带ISO 5211上法兰
 工作温度: -25 + 180 °C

Body: Stainless steel
 Ball: Stainless steel "T" shape
 Stem: Stainless steel
 With ISO 5211 flange
 Temp: -25 +180 °C



L4.622 ISO

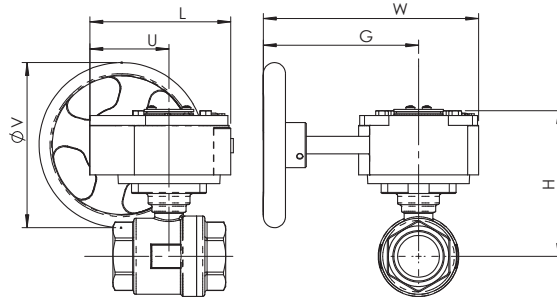
阀体: AISI 316
 阀球: L型 AISI 316
 阀杆: AISI 316
 带ISO 5211上法兰
 工作温度: -25 + 180 °C

Body: Stainless steel
 Ball: Stainless steel "L" shape
 Stem: Stainless steel
 With ISO 5211 flange
 Temp: -25 +180 °C



B3.622 + RM

齿轮箱
Gear box

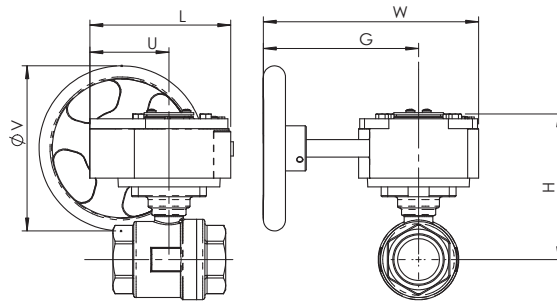


DN	1/4"	3/8"	1/2"	3/4"	1"	1" 1/4	1" 1/2	2"	2" 1/2	3"	4"
B3.622 + RM	RM.0250	RM.0250	RM.0250	RM.0250	RM.0250	RM.0250	RM.0250	RM.0250	RM.0250	RM.0250	RM.0250
L	130	130	130	130	130	130	130	130	130	130	130
U	77	77	77	77	77	77	77	77	77	77	77
H	139	139	139	144.5	107.5	116	121.5	129.5	155	171	183
W	225	225	225	225	225	225	225	225	225	225	225
G	170	170	170	170	170	170	170	170	170	170	170
V	150	150	150	150	150	150	150	150	150	150	150
重量 / Weight Kg	4.67	4.65	4.67	4.79	5.04	5.48	6.24	7.2	10.07	12.75	19.9



C3.622 + RM

齿轮箱
Gear box

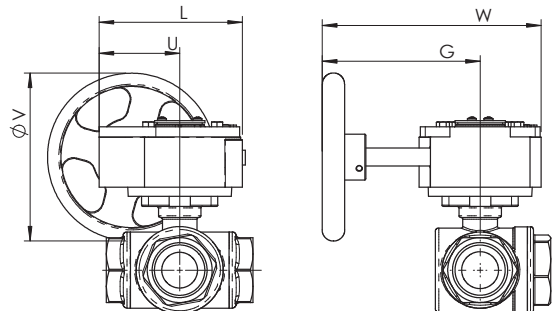


DN	1/4"	3/8"	1/2"	3/4"	1"	1" 1/4	1" 1/2	2"	2" 1/2	3"	4"
C3.622 + RM	RM.0250	RM.0250	RM.0250	RM.0250	RM.0250	RM.0250	RM.0250	RM.0250	RM.0250	RM.0250	RM.0250
L	130	130	130	130	130	130	130	130	130	130	130
U	77	77	77	77	77	77	77	77	77	77	77
H	134.5	134.5	139	104	107.5	116	121.5	130	162	174.5	187.5
W	225	225	225	225	225	225	225	225	225	225	225
G	170	170	170	170	170	170	170	170	170	170	170
V	150	150	150	150	150	150	150	150	150	150	150
重量 / Weight Kg	4.71	4.7	4.75	5.16	5.52	6.18	7.08	7.86	11.5	16.4	24.2



T4.622/L4.622 + RM

齿轮箱
Gear box



DN	1/4"	3/8"	1/2"	3/4"	1"	1" 1/4	1" 1/2	2"
T4/L4.622 + RM	RM.0250	RM.0250	RM.0250	RM.0250	RM.0250	RM.0250	RM.0250	RM.0250
L	130	130	130	130	130	130	130	130
U	77	77	77	77	77	77	77	77
H	139	139	139	103	109	118	122	133
W	225	225	225	225	225	225	225	225
G	170	170	170	170	170	170	170	170
V	150	150	150	150	150	150	150	150
重量 / Weight Kg	5	4.97	4.93	5.24	5.69	7.21	7.96	10.61

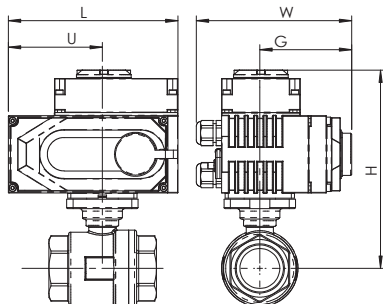
驱动器和附件 / Actuators and accessories



B3.622 + AOX

电动执行器

Electric Actuators



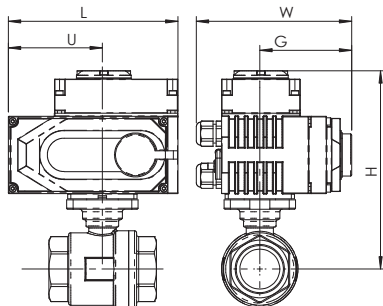
DN	1/4"	3/8"	1/2"	3/4"	1"	1" 1/4	1" 1/2	2"	2" 1/2	3"	4"
B3.622 + AOX	003	003	003	003	003	003	005	005	008	015	020
L	123	123	123	123	123	123	160	160	160	189	268
H	150	150	150	156	159	167	181	189	214	238	285
W	100	100	100	100	100	100	121	121	121	145	225
重量 / Weight Kg	2.33	2.33	2.34	2.55	2.75	3.15	5.3	6.21	8.61	12.21	27.75



C3.622 + AOX

电动执行器

Electric Actuators



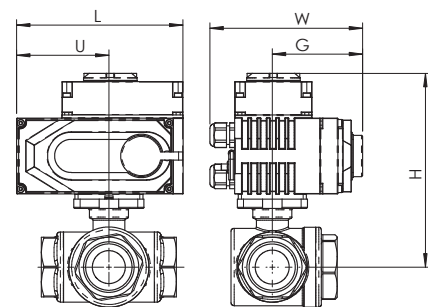
DN	1/4"	3/8"	1/2"	3/4"	1"	1" 1/4	1" 1/2	2"	2" 1/2	3"	4"
C3.622 + AOX	003	003	003	003	003	005	005	005	008	015	020
L	142	142	142	142	142	155	213	213	236	276	310
H	124	124	124	130	133	157	180	188	223	254	293
W	60	60	60	60	60	73	85	85	98	110	128
重量 / Weight Kg	2.51	2.51	2.55	2.96	2.96	5.48	6.38	7.16	10.8	16.7	32.9



T4.622/L4.622 + AOX

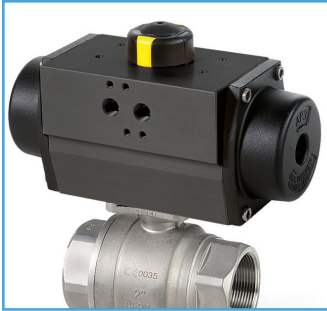
电动执行器

Electric Actuators



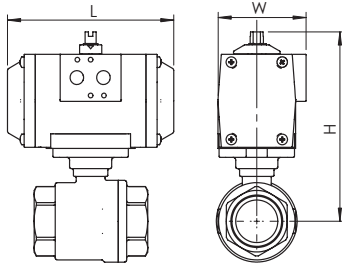
DN	1/4"	3/8"	1/2"	3/4"	1"	1" 1/4	1" 1/2	2"
04.622 + AOX	003	003	003	003	003	005	005	008
L	123	123	123	123	123	160	160	160
H	150	150	150	154	160	177	181	192
W	100	100	100	100	100	121	121	121
重量 / Weight Kg	2.8	2.77	2.73	3.04	3.49	6.51	7.26	9.91

驱动器附件 / Actuators and accessories



B3.622 + AP

气动执行器
Pneumatic actuator

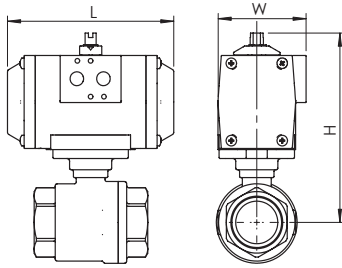


DN	1/4"	3/8"	1/2"	3/4"	1"	1" 1/4	1" 1/2	2"	2" 1/2	3"	4"
B3.622 + AP DE - DA	AP1	AP1	AP1	AP1	AP1	AP2	AP3	AP3	AP3.5	AP4	AP4.5
L	142	142	142	142	142	155	213	213	236	276	310
H	124	124	124	130	133	157	180	188	223	254	293
W	60	60	60	60	60	73	85	85	98	110	128
重量 / Weight Kg	1.23	1.23	1.24	1.45	2.07	2.47	4.24	5.15	8.69	12.71	22.99
B3.622 + AP SE - 弹簧复位 / SPRING RETURN	AP2S	AP2S	AP2S	AP2S	AP3S	AP3S	AP3.5S	AP4S	AP4.5S	AP5S	AP5.5S
L	155	155	155	155	213	213	236	276	310	366	388
H	140	140	140	146	166	174	190	213	265	294	387
W	73	73	73	73	85	85	98	110	128	140	160
重量 / Weight Kg	1.79	1.79	1.8	2.01	3.75	4.15	6	8.81	14.68	20.23	31.84



C3.622 + AP

气动执行器
Pneumatic actuator

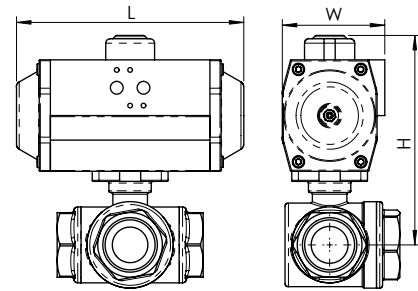


DN	1/4"	3/8"	1/2"	3/4"	1"	1" 1/4	1" 1/2	2"	2" 1/2	3"	4"
C3.622 + AP DE - DA	AP1	AP1	AP1	AP1	AP1	AP3	AP3	AP3	AP3.5	AP4	AP4.5
L	142	142	142	142	142	155	213	213	236	276	310
H	124	124	124	130	133	157	180	188	223	254	293
W	60	60	60	60	60	73	85	85	98	110	128
重量 / Weight Kg	1.41	1.41	1.45	2.28	2.28	4.42	5.32	6.1	10.88	17.2	28.14
C3.622 + AP SE - 弹簧复位 / SPRING RETURN	AP2S	AP2S	AP2S	AP2S	AP3S	AP3S	AP3.5S	AP4S	AP4.5S	AP5S	AP5.5S
L	155	155	155	155	213	213	236	276	310	366	388
H	176	176	180	145	166	174	190	213	272	298	392
W	73	73	73	73	85	85	98	110	128	140	160
重量 / Weight Kg	1.97	1.97	2.01	2.42	3.96	4.98	7.08	9.76	16.87	24.72	36.99

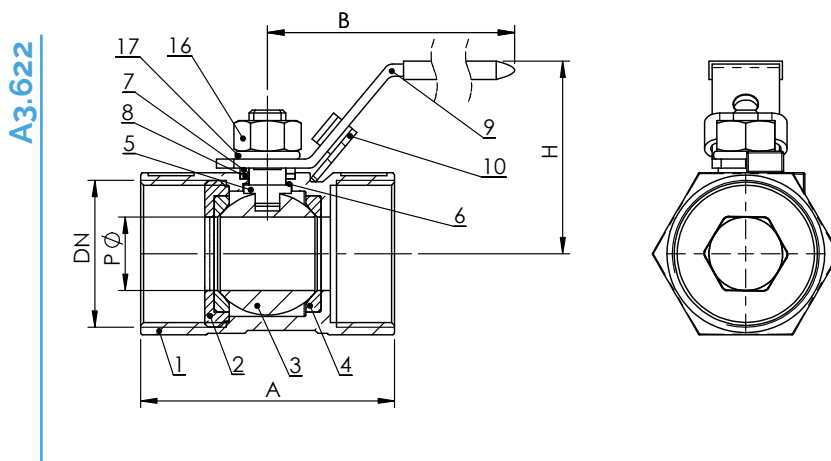


T4.622/L4.622 + AP

气动执行器
Pneumatic actuator



DN	1/4"	3/8"	1/2"	3/4"	1"	1" 1/4	1" 1/2	2"
04.622 + AP DE - DA	AP1	AP1	AP1	AP2	AP2	AP3	AP3	AP3.5
L	142	142	142	155	155	213	213	236
H	124	124	124	144	150	176	180	201
W	60	60	60	73	73	85	85	98
重量 / Weight Kg	1.7	1.67	1.63	2.36	2.81	5.45	6.2	9.99
04.622 + AP SE - 弹簧复位 / SPRING RETURN	AP2S	AP2S	AP2S	AP3S	AP3S	AP3.5S	AP4S	AP4.5S
L	155	155	155	213	213	236	276	310
H	140	140	140	161	167	186	205	303
W	73	73	73	85	85	98	110	128
重量 / Weight Kg	2.26	2.23	2.19	4.04	4.49	7.21	9.86	15.98



尺寸 (mm) / Dimensions (mm)

DN	1/4"	3/8"	1/2"	3/4"	1"	1" 1/4	1" 1/2	2"
P	5	7	9.5	12.5	16	20	25	32
A	40	45	56	59	71	76	85	99
B	67	67	93	93	103	103	128	128
H	32	33	43	45	48	58	67	74

重量 (kg) / Weight (kg)

A3,622	0,09	0,12	0,19	0,28	0,39	0,58	0,85	1,35
--------	------	------	------	------	------	------	------	------

扭矩 (Nm) / Operating torque (Nm)

Nm	4	4	6	6	8	10	14	15
----	---	---	---	---	---	----	----	----

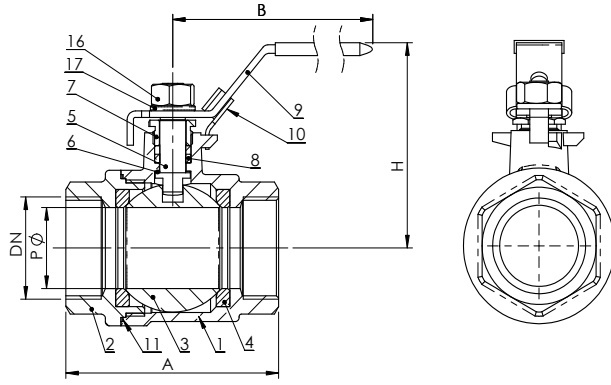
注意：请将扭矩数值乘以1.5倍作为选择驱动装置的依据。

N.B.: In order to choose the right actuator, we recommend multiplying the operating torque figure by a safety coefficient, K=1.5

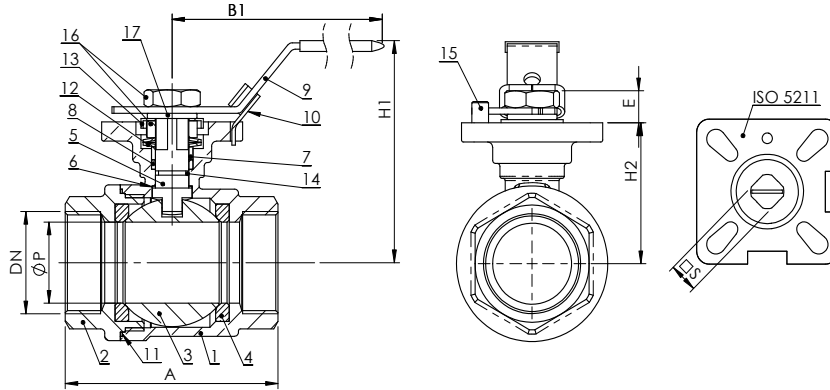
材质 / Materials

	组件 - Component	材质 - Material
1	阀体 - Body	不锈钢 - Stainless steel ASTM A351 CF8M
2	衬座 - Cap	不锈钢 - Stainless steel ASTM A351 CF8M
3	球阀 - Ball	不锈钢 - Stainless steel AISI 316
4	球座 - Ball seat	加强型PTFE - Reinforced PTFE
5	阀杆 - Stem	不锈钢 - Stainless steel AISI 316
6	滑动垫圈 - Sliding washer	PTFE
7	圆环 - Ring	不锈钢 - Stainless steel AISI 304
8	阀杆密封 - Stem seal	PTFE
9	手柄 - Lever	AISI 304 (带塑料把套) - AISI 304 with plastic sleeve
10	锁定装置 - Lock device	不锈钢 - Stainless steel AISI 304
16	螺母 - Nut	不锈钢 - Stainless steel AISI 304
17	弹簧垫 - Spring washer	不锈钢 - Stainless steel AISI 304

B3.622



B3.622 ISO



尺寸 (mm) / Dimensions (mm)

DN	1/4"	3/8"	1/2"	3/4"	1"	1" 1/4	1" 1/2	2"	2" 1/2	3"	4"
P	11.5	12.5	15	20	25	32	40	50	65	76	94
A	49	49	57	64	77	90	105	125	154	173	221
B	105	105	105	118	150	150	182	182	254	254	285
H	54	54	56	65	70	75	93	99	123	140	175
A1	56	56	57	64	77	90	105	125	153	172	221
B1	115	115	117	117	134	134	203	203	254	254	302
H1	65	65	65	70	75	85	95	105	140	145	175
H2	37	37	37	43	46	54	60	68	93	109	121
E	8	8	9	11	11	12.5	12.5	12	17	16	19
S	9	9	9	9	11	11	14	14	17	17	17
ISO 5211	F03	F03	F03/F04	F03/F04	F04/F05	F04/F05	F05/F07	F05/F07	F07/F10	F07/F10	F07/F10

重量 (kg) / Weight (kg)

B3.622	0.23	0.23	0.24	0.45	0.65	1.05	1.7	2.61	5.01	7.61	14.75
B3.622带ISO上法兰/with ISO flange	0.37	0.35	0.37	0.49	0.74	1.18	1.94	2.90	5.77	8.45	15.60

扭矩 (Nm) / Operating torque (Nm)

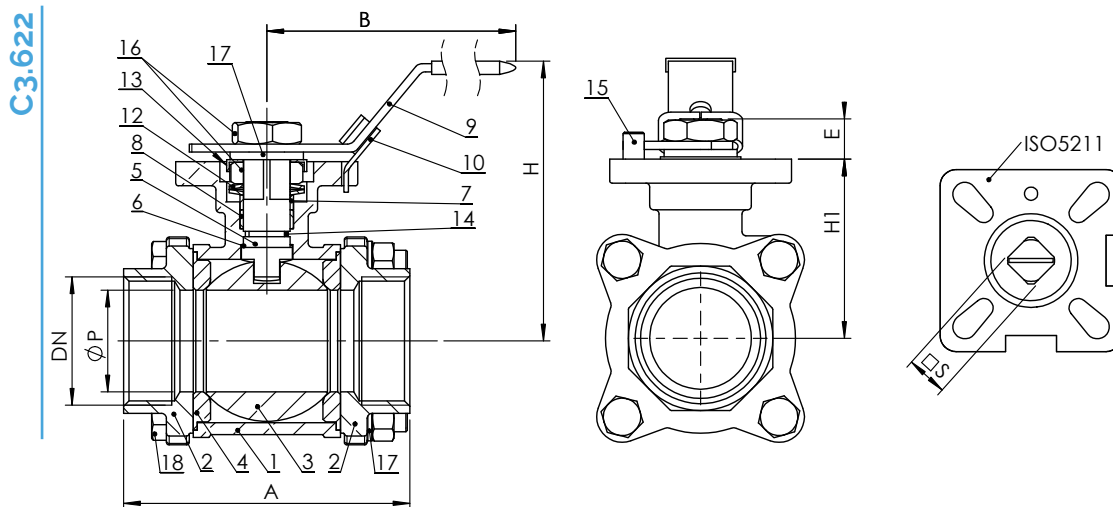
Nm	5	5	5	8	10	14	18	25	48	75	110
----	---	---	---	---	----	----	----	----	----	----	-----

注意：请将扭矩数值乘以15倍作为选择驱动装置的依据。

N.B.: In order to choose the right actuator, we recommend multiplying the operating torque figure by a safety coefficient, K=15

材质 / Materials

组件 - Component	材质 - Material
1 阀体 - Body	不锈钢 - Stainless steel ASTM A351 CF8M
2 衬座 - Cap	不锈钢 - Stainless steel ASTM A351 CF8M
3 阀球 - Ball	不锈钢 - Stainless steel AISI 316
4 球座 - Ball seat	加强型PTFE - Reinforced PTFE
5 阀杆 - Stem	不锈钢 - Stainless steel AISI 316
6 滑动垫圈 - Sliding washer	PTFE
7 圆环 - Ring	不锈钢 - Stainless steel AISI 304
8 阀杆密封 - Stem seal	PTFE
9 手柄 - Lever	AISI 304 (带塑料把套) - AISI 304 with plastic sleeve
10 锁定装置 - Lock device	不锈钢 - Stainless steel AISI 304
11 锁定装置 - Body seal	PTFE
12 蝶形弹簧 - Belleville Spring	不锈钢 - Stainless steel AISI 301
13 垫片 - Spacer	不锈钢 - Stainless steel AISI 304
14 O型圈 - O-ring	FKM (Viton®)
15 限位柱 - Lever stop pin	不锈钢 - Stainless steel AISI 304
16 螺母 - Nut	不锈钢 - Stainless steel AISI 304
17 弹簧垫 - Spring washer	不锈钢 - Stainless steel AISI 304



尺寸 (mm) / Dimensions (mm)

DN	1/4"	3/8"	1/2"	3/4"	1"	1" 1/4	1" 1/2	2"	2" 1/2	3"	4"
P	11	12,5	15	20	25	32	40	50	65	76	94
A	48	48	54	73	80	90	102	118	151	182	218
B	115	115	117	134	134	203	203	203	255	255	302
H	59	59	63	70	74	88	94	102	140	153	166
H1	33	33	37	42	46	54	60	68	100	113	126
E											
S	9	9	9	11	11	14	14	14	17	17	17
ISO 5211	F03	F03	F03	F04/F05	F04/F05	F05/F07	F05/F07	F05/F07	F07/F10	F07/F10	F07/F10

重量 (kg) / Weight (kg)

C3.622	0,41	0,40	0,45	0,86	1,22	1,88	2,78	3,56	7,20	12,10	19,90
--------	------	------	------	------	------	------	------	------	------	-------	-------

扭矩 (Nm) / Operating torque (Nm)

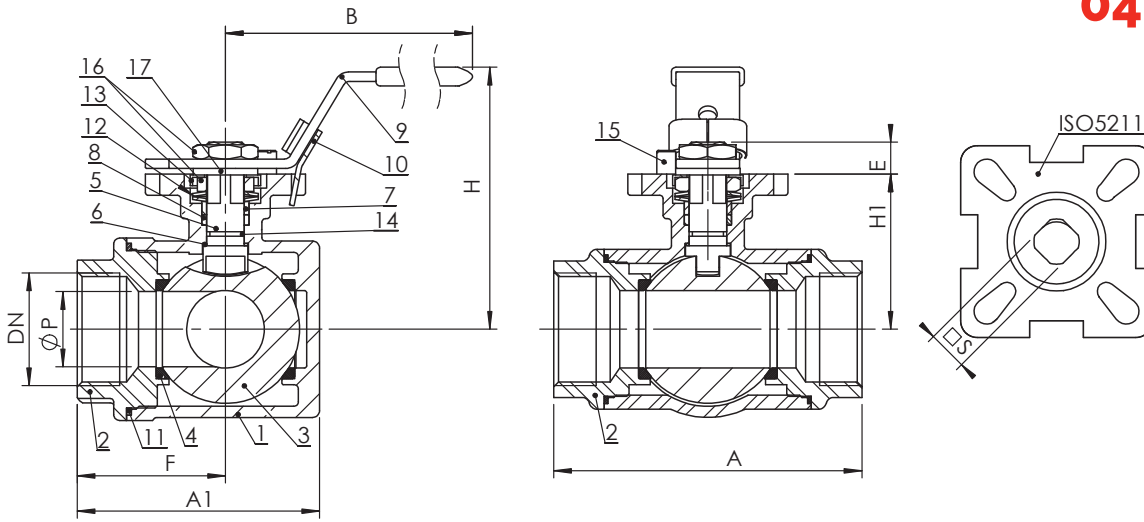
Nm	4	4	5	8	10	14	18	25	48	75	110
----	---	---	---	---	----	----	----	----	----	----	-----

注意: 请将扭矩数值乘以1.5倍作为选择驱动装置的依据。

N.B.: In order to choose the right actuator, we recommend multiplying the operating torque figure by a safety coefficient, K=1.5

材质 / Materials

组件 - Component	材质 - Material
1 阀体 - Body	不锈钢 - Stainless steel ASTM A351 CF8M
2 衬座 - Cap	不锈钢 - Stainless steel ASTM A351 CF8M
3 球阀 - Ball	不锈钢 - Stainless steel AISI 316
4 球座 - Ball seat	加强型PTFE - Reinforced PTFE
5 阀杆 - Stem	不锈钢 - Stainless steel AISI 316
6 滑动垫圈 - Sliding washer	PTFE
7 圆环 - Ring	不锈钢 - Stainless steel AISI 304
8 阀杆密封 - Stem seal	PTFE
9 手柄 - Lever	AISI 304 (带塑料把套) - AISI 304 with plastic sleeve
10 锁定装置 - Lock device	不锈钢 - Stainless steel AISI 304
12 蝶形弹簧 - Belleville Spring	不锈钢 - Stainless steel AISI 301
13 垫片 - Spacer	不锈钢 - Stainless steel AISI 304
14 O型圈 - O-ring	FKM (Viton®)
15 限位柱 - Lever stop pin	不锈钢 - Stainless steel AISI 304
16 螺母 - Nut	不锈钢 - Stainless steel AISI 304
17 弹簧垫 - Spring washer	不锈钢 - Stainless steel AISI 304
18 横拉杆 - Tie rod	不锈钢 - Stainless steel AISI 304



尺寸 (mm) / Dimensions (mm)

DN	1/4"	3/8"	1/2"	3/4"	1"	1" 1/4	1" 1/2	2"
P	9.5	11	12	15	20	25	32	40
A	75	75	75	85	100	122	131	158
A1	57.5	57.5	57.5	65.5	79	97	106.5	129
F	37.5	37.5	37.5	42.5	50	61	65.5	79
B	130	130	130	161	161	203	203	203
H	66	66	66	2	77	92	96	107
H1	37	37	37	41	47	56	60	71
E	8.5	8.5	8.5	11	12	13.5	13.5	13
S	9	9	9	11	11	14	14	14
ISO 5211	F03/F04	F03/F04	F03/F04	F04/F05	F04/F05	F05/F07	F05/F07	F05/F07

重量 (kg) / Weight (kg)

04.622	0.7	0.67	0.63	0.94	1.39	2.91	3.66	6.31
--------	-----	------	------	------	------	------	------	------

扭矩 (Nm) / Operating torque (Nm)

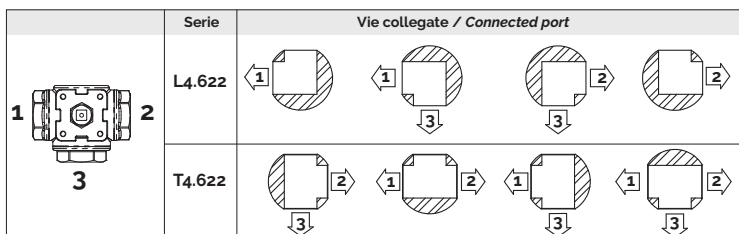
Nm	8	8	8	9	15	20	30	45
----	---	---	---	---	----	----	----	----

注意：请将扭矩数值乘以1.5倍作为选择驱动装置的依据。

N.B.: In order to choose the right actuator, we recommend multiplying the operating torque figure by a safety coefficient, K=1.5

材质 / Materials

组件 - Component	材质 - Material
1 阀体 - Body	不锈钢 - Stainless steel ASTM A351 CF8M
2 衬座 - Cap	不锈钢 - Stainless steel ASTM A351 CF8M
3 球阀 - Ball	不锈钢 - Stainless steel AISI 316
4 球座 - Ball seat	加强型PTFE - Reinforced PTFE
5 阀杆 - Stem	不锈钢 - Stainless steel AISI 316
6 滑动垫圈 - Sliding washer	PTFE
7 圆环 - Ring	不锈钢 - Stainless steel AISI 304
8 阀杆密封 - Stem seal	PTFE
9 手柄 - Lever	AISI 304 (带塑料把套) - AISI 304 with plastic sleeve
10 锁定装置 - Lock device	不锈钢 - Stainless steel AISI 304
12 蝶形弹簧 - Belleville Spring	不锈钢 - Stainless steel AISI 301
13 垫片 - Spacer	不锈钢 - Stainless steel AISI 304
14 O型圈 - O-ring	FKM (Viton®)
15 限位柱 - Lever stop pin	不锈钢 - Stainless steel AISI 304
16 螺母 - Nut	不锈钢 - Stainless steel AISI 304
17 弹簧垫 - Spring washer	不锈钢 - Stainless steel AISI 304
18 横拉杆 - Tie rod	不锈钢 - Stainless steel AISI 304



最大工作压力 / Maximum pressure

类型 - Article	压力 - bar
A3.622	63 bar
B3.622	63 bar
C3.622	63 bar
C3.622	63 bar
04.622	63 bar

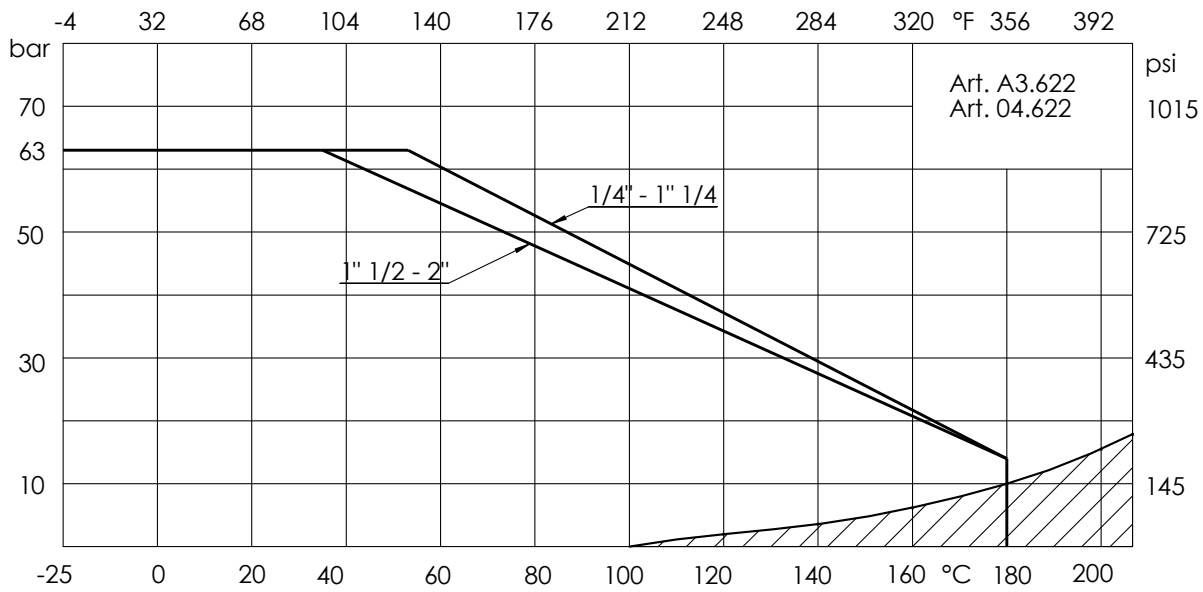
工作温度 / Temperature (°C)

温度 - Temperature	最低 - Min	最高 - Max
	-25	180

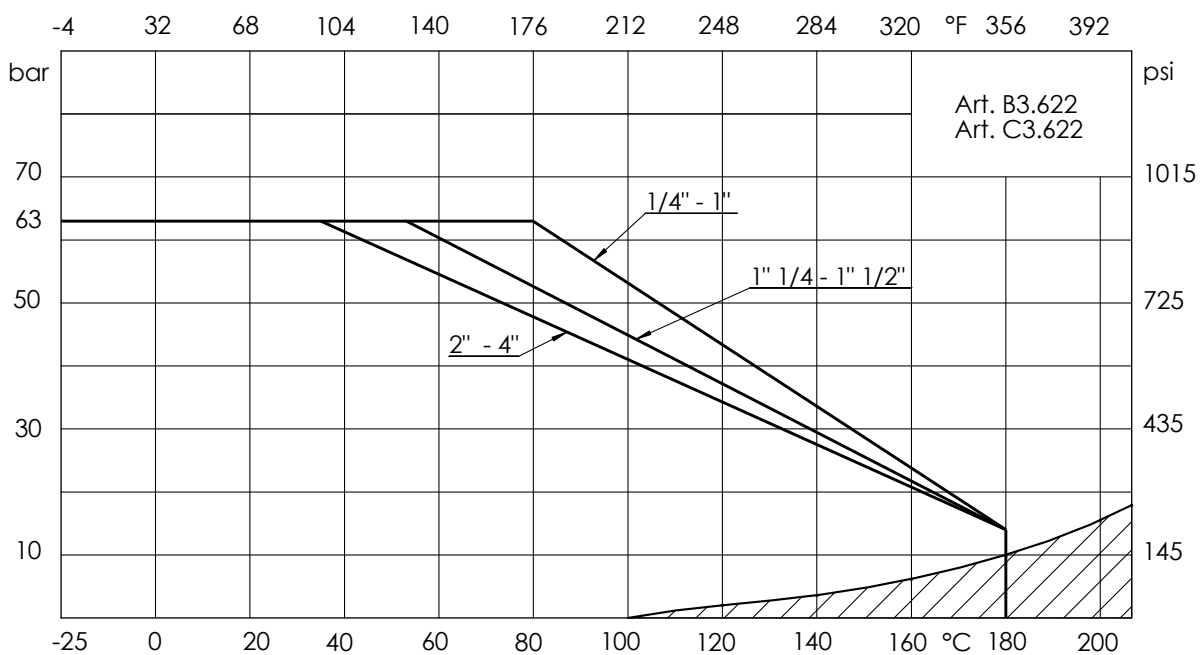
注意：温度上升时最大工作压力会有所下降；详情请参考压力温度曲线
 NB: the maximum working pressure decreases while the temperature increases; please refer to "pressure/temperature" chart

压力温度曲线 - Pressure/temperature chart

A3.622 / 04.622系列



B3.622 / C3.622系列



不适用于蒸汽系统。当工作温度和压力处于饱和蒸汽压曲线（阴影区域）下方时，请勿使用该阀门。

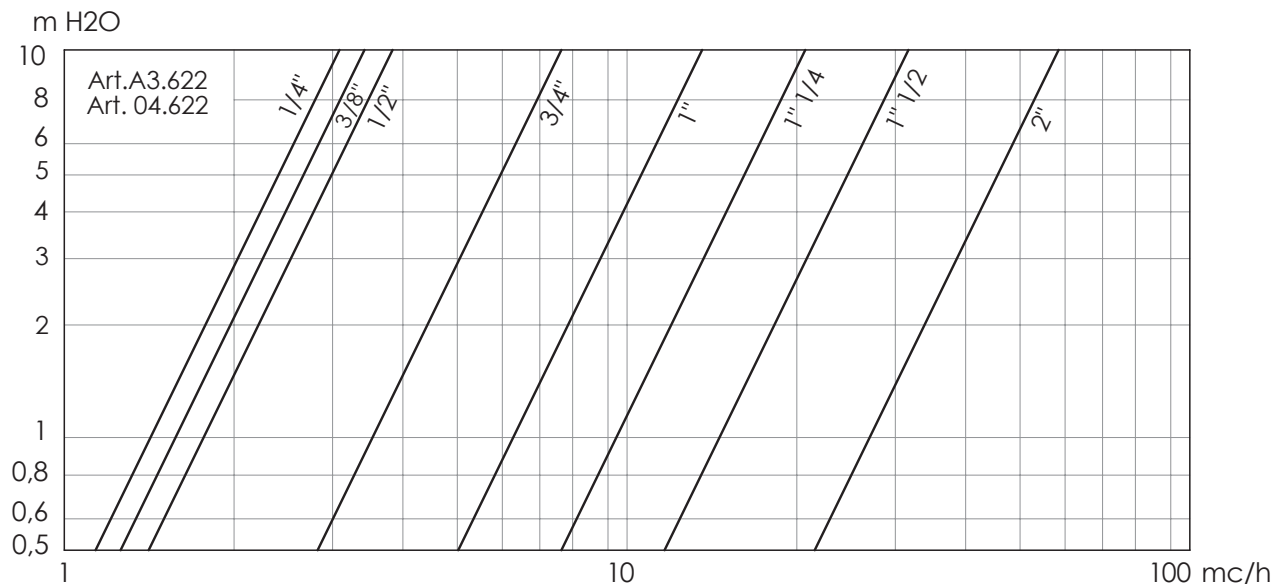
RANGE NOT SUITABLE FOR STEAM. DO NOT use when temperature and pressure are below the liquid-steam saturation line (hatched area)



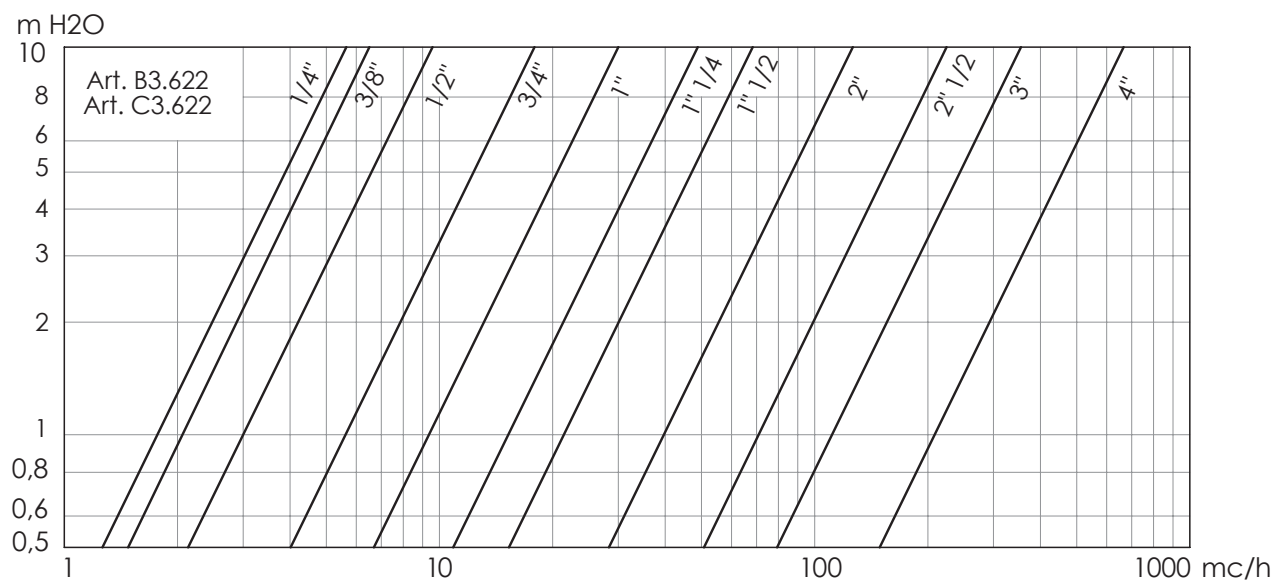
水头损失 介质: 水 (1m H₂O = 0,098bar) - 阀门完全开启时的水头损失

Head loss Fluid: water (1m H₂O = 0,098bar) - Head loss with shutter fully opened

A3.622 / 04.622系列



B3.622 / C3.622系列



Kv - DN表 / Kv - DN chart

DN	1/4"	3/8"	1/2"	3/4"	1"	1 1/4"	1 1/2"	2"	2 1/2"	3"	4"	
A3.622 - 04.622	Kv mc/h	3,2	3,4	3,8	7,7	13,7	20,5	31,5	58	-	-	-
B3.622 - C3.622	Kv mc/h	5,6	6,8	9,6	17,9	30	49	68	126	226	355	667

03-04 inox系列说明及建议

储存

请保存在密闭干燥的环境中。

维护

此类阀门无需维护。

建议

阀门进行任何维修或拆卸前，请确保：管路、阀门和流体已冷却；压力已卸去；管路及管道中的有毒、易燃、有腐蚀性的流体已排净。

50°C以上及0°C以下的流体可能会对人体造成伤害。

安装

- 小心装卸。
- 阀门安装时需保证其处于全开或全闭状态。
- 水锤作用会导致阀门损坏或破裂。倾斜、扭转、阀门管路中心线与管路未对准会使阀门受力。建议安装弹性接头等来尽量减少管路的震荡。
- 低于0°C时，阀体与球阀间的流体可能结冻，造成无法逆转的损坏。如阀门暴露在这样的条件下，建议将阀门隔离处理。
- 建议定期开关阀门，以防球阀及阀座表面杂质堆积，特别是流体中存在较多钙离子时。

处置

对于输送危险介质（有毒、腐蚀性……）的阀门，如果阀门中可能残留残余物，请采取适当的安全预防措施并进行必要的清洁。负责人员必须经过培训并配备适当的防护装置。

在处置之前，请按照不同材料拆卸阀门并分离组件。请参考产品资料获取更多信息。根据当地和现行有效的法规并在考虑环境的情况下，将分类的物料送交回收利用（例如金属材料）或进行处置。

Instructions and Recommendations for series 03-04 inox

STORING

Keep in a dry and closed place.

MAINTENANCE

The valve does not require maintenance.

RECOMMENDATIONS

Before carrying out maintenance, or dismantling the valve, be sure that the pipes, valves and liquids have cooled down, that the pressure has decreased and that the lines and pipes have been drained in case of toxic, corrosive, inflammable or caustic liquids.

Temperatures above 50°C and below 0°C might cause damage to people.

INSTALLATION

- Handle with care.
- The valve must be installed in either the ON or OFF position.
- Water hammers might cause damage and ruptures. Inclination, torsions and misalignments of the piping may subject the installed valve to excessive stresses. It is recommended that elastic joints be used in order to reduce such effects as much as possible.
- At sub-zero temperatures, the liquid between the body and ball may freeze, causing irreparable damage. If the valve is exposed to such conditions, insulation of the valve is recommended.
- It is recommended that the valve be operated periodically, to prevent the build-up of materials on the ball and the seats.

DISPOSAL

For valve operating with hazardous media (toxic, corrosive...), if there is a possibility of residue remaining in the valve, take due safety precaution and carry out required cleaning operation. Personnel in charge must be trained and equipped with appropriate protection devices.

Prior to disposal, disassemble the valve and separate the component according to various materials. Please refer to product literature for more information. Forward sorted material to recycling (e.g. metallic materials) or disposal, according to local and currently valid legislation and under consideration of the environment.