

F8系列



法兰式弹性橡胶接头
Flanged elastic rubber joint

DOWNLOAD
DATASHEET



b-Smart, Be-Brandoni



brandoni
VALVES

www.brandonivalves.com

法兰式弹性橡胶接头 / Flanged elastic rubber joint

弹性橡胶接头可有效保护系统免受拉伸、压缩、错位、弯曲等带来的伤害，减少震荡，吸收噪音，显著改善水锤的影响。

类型可分为：

F8.1 > NBR

F8.5 > EPDM

F8.508 > WRAS认证EPDM

YES: 适用于水系统、泵站、空调和供热系统、工业和农业系统、压缩空气系统。

附件

控制杆组件

Elastic joints protect the piping from extension, compression, misalignments and bending. Suitable for reducing vibrations and noise absorption, allowing the further reduction of the effects of water hammers.

Available in versions:

F8.1 > NBR

F8.5 > EPDM

F8.508 > EPDM WRAS approved

YES: *for water plants, pumping stations, conditioning and heating, industrial and agricultural applications, compressed air circuits.*

Accessories

Control rod unit

认证 / Certifications



F8.5系列

适用于饮用水应用，符合意大利D.M.174标准。

F8.508系列已通过Wras认证

结构及检测标准：

法兰标准：EN 1092

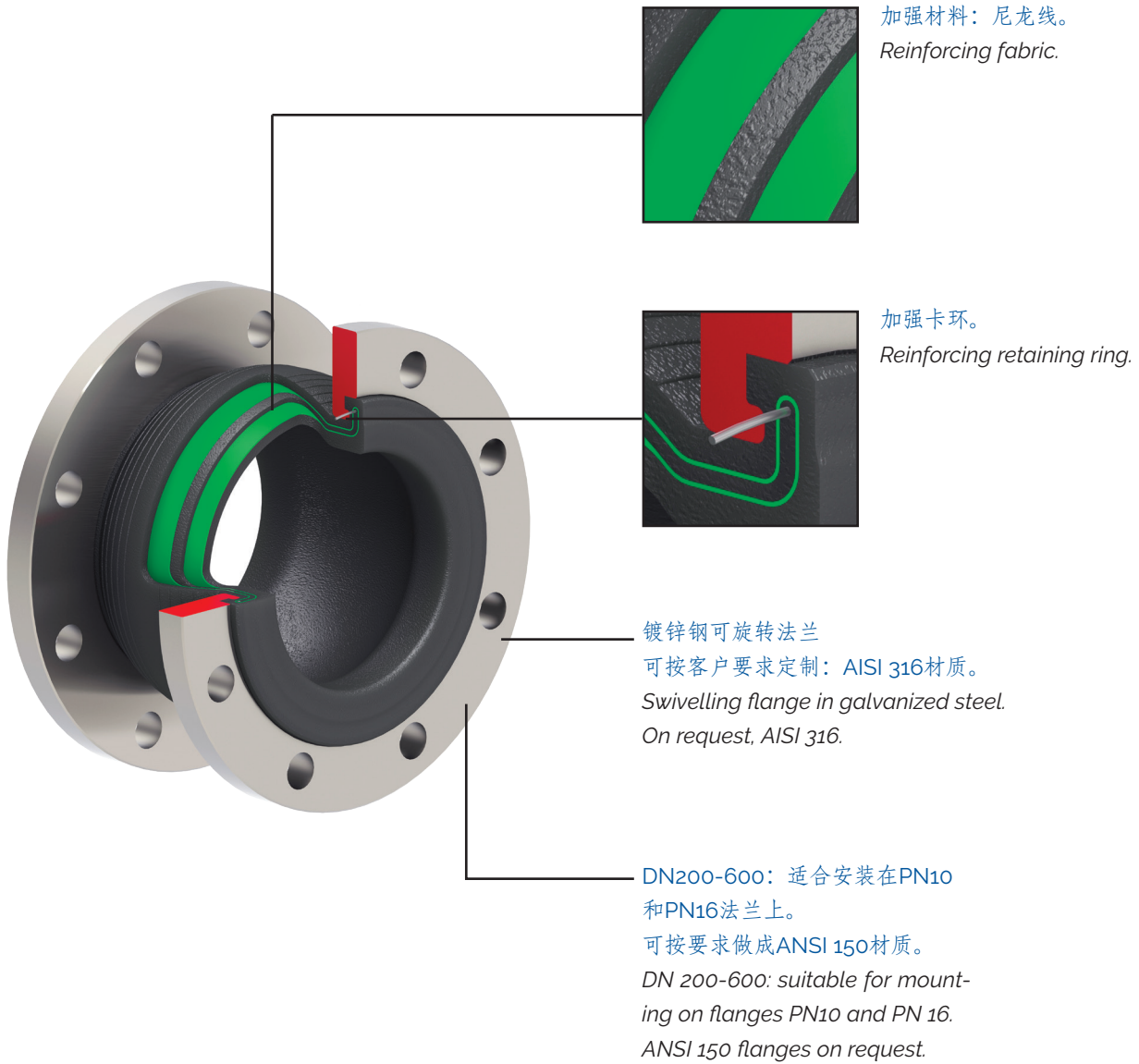
Series F8.5

Suitable for drinking water applications, comply with Italian regulation D.M.174.

Serie F8.508 Wras certificated

Design and testing standards (correspondences):

Flanges: EN 1092



法兰式弹性橡胶接头 / Flanged elastic rubber joint

EPDM

NBR



F8.500

阀体: EPDM
法兰: 镀锌钢
工作温度: -10 +100°C

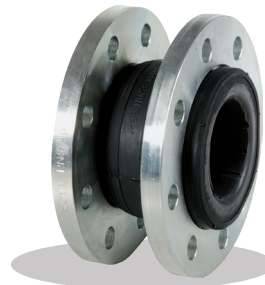
Body: EPDM
Flanges: galvanized steel
Temp: -10 +100°C



F8.520

阀体: EPDM
法兰: AISI 316
工作温度: -10 +100°C

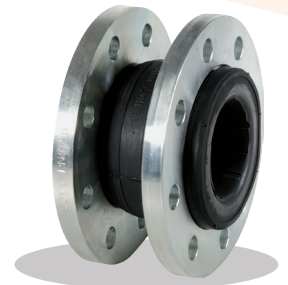
Body: EPDM
Flanges: AISI 316
Temp: -10 +100°C



F8.100

阀体: NBR
法兰: 镀锌钢
工作温度: -10 +80°C

Body: NBR
Flanges: galvanized steel
Temp: -10 +80°C

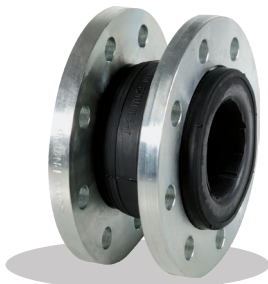


F8.120

阀体: NBR
法兰: AISI 316
工作温度: -10 +80°C

Body: NBR
Flanges: AISI 316
Temp: -10 +80°C

EPDM



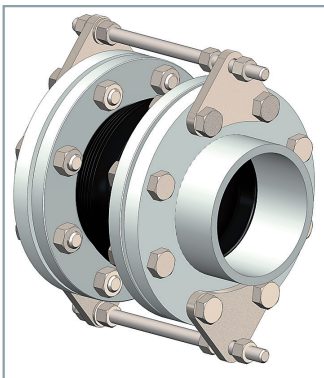
F8.508

阀体: EPDM
法兰: 镀锌钢
工作温度: -10 +100°C

Body: EPDM
Flanges: galvanized steel
Temp: -10 +100°C



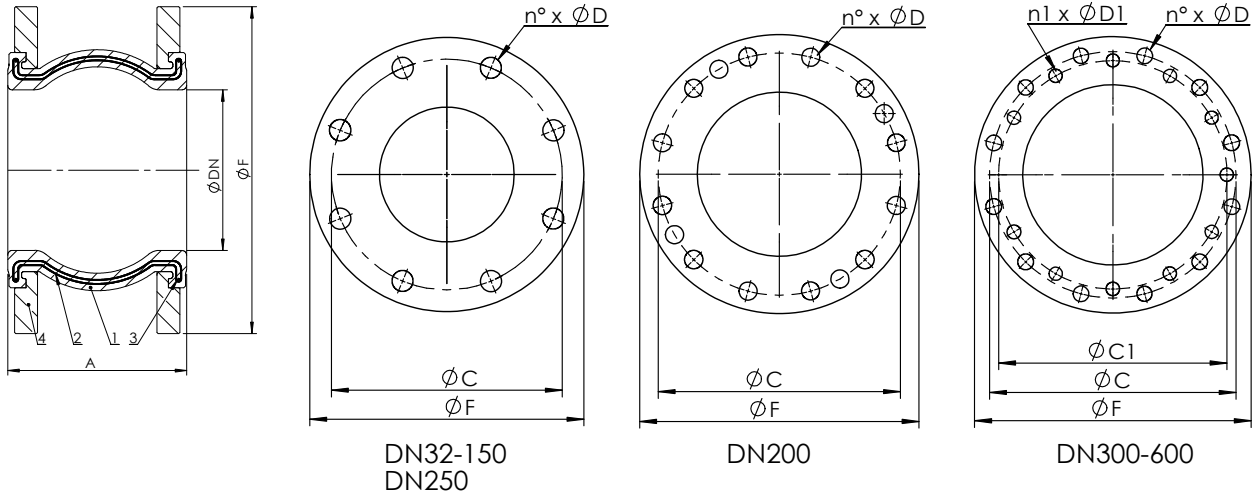
附件 / Accessories



F8组件 / KIT

镀锌碳钢控制杆组件

Control rod unit in galvanized carbon steel



法兰钻孔及伸缩接头安装注意事项

F8系列伸缩接头可以安装在PN10和PN16法兰之间。

为了正确安装，请旋转接头的法兰，直到找到与对接法兰的所有孔相对应的位置。

有关中心距和钻孔直径，请参见表。

Notes on flange drilling and for expansion joints installation

The F8 series expansion joints can be installed between PN10 and PN16 flanges.

For a correct installation rotate the flanges of the joint until you find the correspondence with ALL the holes of the counter flanges.

For center distances and drilling diameters, see table.

尺寸 (mm) / Dimensions (mm)

轴向压缩 (mm) / Compression (mm)

| | | | | | | | | | | | | | | | | | |
|----|--|---|---|---|----|----|----|----|----|----|----|----|----|----|----|----|----|
| F8 | | 8 | 8 | 8 | 12 | 12 | 12 | 16 | 16 | 20 | 20 | 20 | 25 | 25 | 20 | 20 | 20 |
|----|--|---|---|---|----|----|----|----|----|----|----|----|----|----|----|----|----|

轴向延伸 (mm) / Extension (mm)

| | | | | | | | | | | | | | | | | | |
|----|--|---|---|---|---|---|----|----|----|----|----|----|----|----|----|----|----|
| F8 | | 4 | 4 | 4 | 6 | 6 | 10 | 10 | 10 | 14 | 14 | 14 | 16 | 16 | 12 | 12 | 12 |
|----|--|---|---|---|---|---|----|----|----|----|----|----|----|----|----|----|----|

横向偏转 (mm) / Lateral deflection (mm)

| | | | | | | | | | | | | | | | | | |
|------|--|---|---|---|----|----|----|----|----|----|----|----|----|----|----|----|----|
| F8 ± | | 8 | 8 | 8 | 10 | 10 | 12 | 12 | 12 | 18 | 18 | 18 | 18 | 18 | 18 | 18 | 18 |
|------|--|---|---|---|----|----|----|----|----|----|----|----|----|----|----|----|----|

偏转角度 (度) / Angular deflection (degrees)

| | | | | | | | | | | | | | | | | | |
|------|--|----|----|----|----|----|----|----|----|----|----|----|----|----|----|----|----|
| F8 ± | | 15 | 15 | 15 | 15 | 15 | 15 | 15 | 15 | 15 | 15 | 15 | 15 | 15 | 15 | 15 | 15 |
|------|--|----|----|----|----|----|----|----|----|----|----|----|----|----|----|----|----|

重量 (kg) / Weight (kg)

| | | | | | | | | | | | | | | | | | |
|----|--|------|------|------|------|------|------|------|-------|-------|-------|-------|-------|-------|----|-------|-----|
| F8 | | 2,80 | 3,80 | 4,20 | 4,80 | 6,30 | 7,20 | 9,30 | 11,60 | 17,50 | 25,50 | 31,50 | 44,10 | 53,80 | 61 | 82,20 | 120 |
|----|--|------|------|------|------|------|------|------|-------|-------|-------|-------|-------|-------|----|-------|-----|

材质 / Materials

| 组件 - Component | | 材质 - Material | |
|----------------|---------------------------|--------------------------------|------|
| 1 | 阀体 | F8.1 | F8.5 |
| | | NBR | EPDM |
| 2 | 加强材料 - Reinforcing fabric | 尼龙 - Nylon | |
| 3 | 加强卡环 - Retaining ring | 硬钢丝 - Hard steel wire | |
| 4 | 法兰 - Flange | 镀锌碳钢 - Carbon steel galvanised | |

法兰式弹性橡胶接头 / Flanged elastic rubber joint

最大工作压力 / Maximum pressure

| 介质* Fluids* | |
|---------------------------------------|--|
| 危险性气体 G1 Hazardous gases G1 | NO |
| 危险性液体 L1 Hazardous liquids L1 | NO |
| 非危险性气体 G2 Non hazardous gases G2 | 16 bar DN15-50 15 bar DN65 12 bar DN80 |
| 非危险性液体 G2 Non hazardous liquids G2 | 16 bar |
| 水** Water** | 16 bar |

* 危险性气体、液体的认证以2014/68/EU和1272/2008 (CLP) 标准为准。

** 是指供水和排水系统的水 (PED 2014/68/EU 1.1.2b)

* hazardous gas, liquids acc. 2014/68/EU e 1272/2008 (CLP)

** For supply, distribution and discharge of water (PED 2014/68/EU 1.1.2b)

工作温度 / Temperature (°C)

| 温度 - Temperature | 最低 - min | 最高 - max |
|------------------|----------|----------|
| EPDM | -10 | 100 |
| NBR | -10 | 80 |

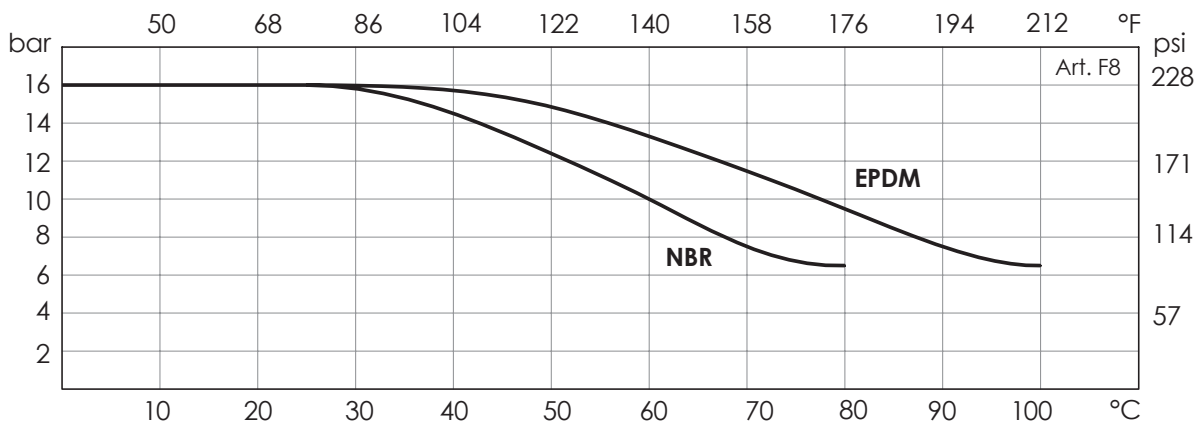
注意：温度上升时最大工作压力会有所下降；详情请参考压力温度曲线
NB: the maximum working pressure decreases while the temperature increases; please refer to "pressure/temperature" chart

最小工作压力 (真空) / Minimum pressure (vacuum)

| 类别 - Article | 压力 - Bar |
|--------------|---------------------------|
| F8 | 0,7 bar (绝对压力 / absolute) |

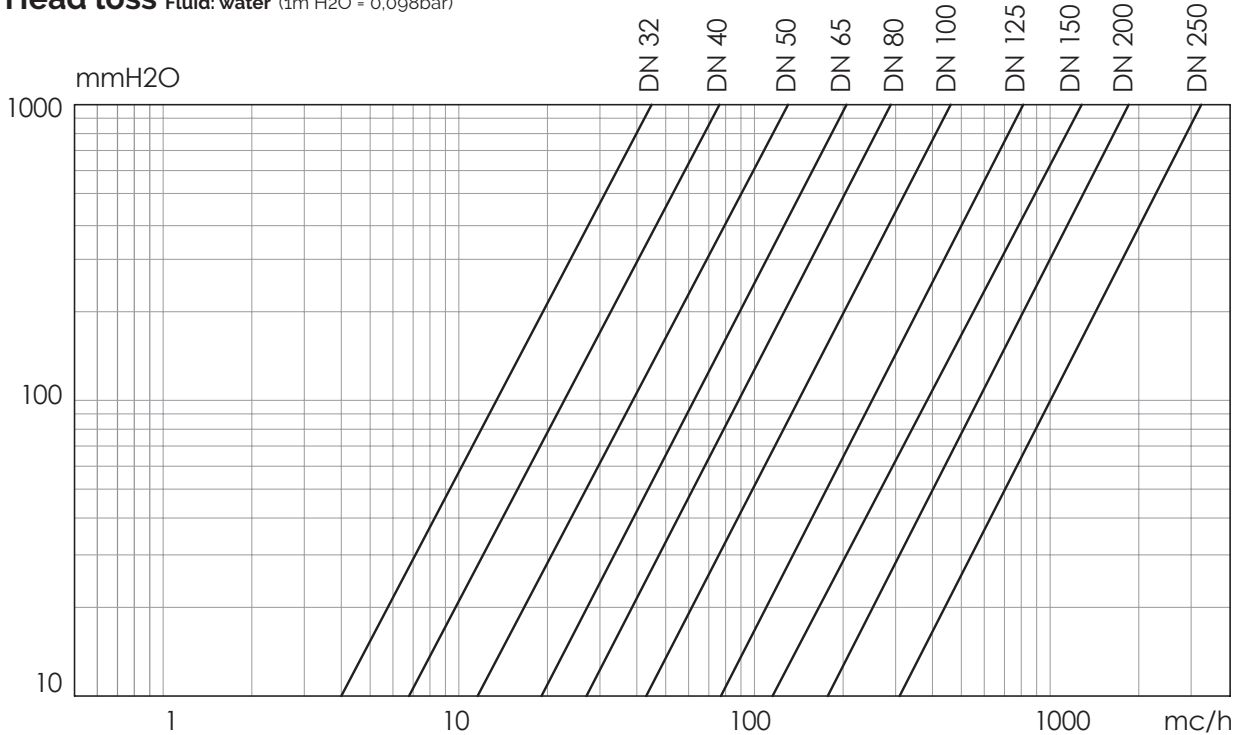
压力温度曲线

Pressure/temperature chart



水头损失 介质: 水 (1m H₂O = 0,098bar)

Head loss Fluid: water (1m H₂O = 0,098bar)



Kv - DN表 / Kv - DN chart

F8系列说明及建议

储存

- 请保存在密闭干燥的环境中。
- 避免阳光直射。

安装

- 按照产品参数，当橡胶接头的伸缩移动距离超过允许值时，就需要安装控制杆组件。当泵或其他设备安装在弹簧或其他未固定或未支撑的元件上时，建议使用。
- 警告。橡胶接头应按其空载长度安装。在接头安装过程中施加的压缩或伸长形变会降低接头的性能，并造成接头早期磨损和损坏。
- 清洁橡胶接头和法兰相互接触的表面。
- 确保与之相连接的法兰上没有突出或尖锐的地方损坏橡胶接头的橡胶。
- 不能先将橡胶接头与法兰连接后，再去将法兰与管道进行焊接。一定要避免在其附近的焊接或打磨等对橡胶的损伤。
- 将螺钉放入法兰孔中，要将螺栓头朝向橡胶接头，以保护橡胶不被损伤（如图1所示）。将螺栓交叉旋紧。

Instruction and Recommendations series F8

STORING

- Keep in a closed and dry place.
- Avoid exposure to direct sunlight.

INSTALLATION

- Control rods should be installed in case movement exceeds the values permitted, indicated in the product specifications. The use is recommended when there are pumps or other devices being installed on springs or other elements not fixed or supported.
- Warning. Install the rubber joint respecting its unloaded length. Compression or elongation deformation imposed during joint installation could reduce performances and cause early wear and damages to joint.
- Clean the surface before bringing the rubber and the flange into contact;
- Ensure that protrusions and sharp edges on the piping do not cause damage to the contact surface of the joint;
- Do not weld the flanges to the piping after installing the joint. Joints must be protected against sparks from any welding/grinding jobs carried out nearby.
- Fit the screw to the flange, with the head of the screw in the direction of the joint, to protect the rubber from damage (Fig. 1). Tighten the bolts crosswise.

- 不能将橡胶的接头与橡胶面相连接（例如，蝶阀）。
- 无需在橡胶接头和法兰间放置密封垫片。
- 要避免阳光直射，当安装在户外时，要对其进行防护。

维护

- 此类阀门无需维护。

控制杆组件的安装

控制杆组件包含以下：

| 零件 - COMPONENT | 螺杆 - RODS | 连接板 - PLATE | 六角螺母 - HEX NUTS |
|----------------|-----------|-------------|-----------------|
| 数量 - Quantity | 2 | 4 | 8 |

1. 将连接板P安装到对接法兰上（如图2所示）。
2. 用两颗螺母将螺杆A固定在连接板上（如图2中D2）。
3. 在另一侧，调节两颗螺栓（D1）相对于连接板的距离，得到橡胶接头的允许延伸量（L）和允许压缩量（C）。确保以上的设定位移量不超过产品参数中的允许值。

图1 / FIG.1

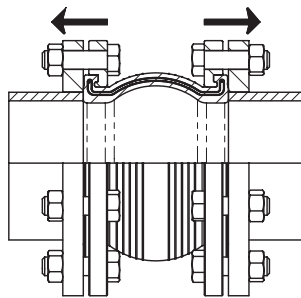
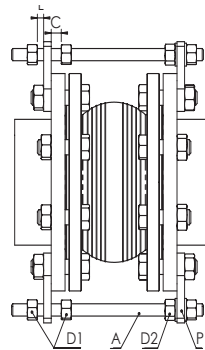


图2 / FIG.2



- Do not install the joint in direct contact with a rubber surface (for example, butterfly valves).
- Do not place gaskets between the joint and counter flange.
- Avoid exposure to direct sunlight. In the case of installing outside, protect the joint, if necessary.

MAINTENANCE

The valve does not require maintenance.

INSTALLATION OF THE CONTROL ROD UNIT

The kit consists of:

1. Install the plates, P, on the counter flange (fig. 2)
 2. Fasten rod A to the plate with two nuts on one side (for example, D2 - fig. 2).
 3. On the opposite side, regulate the distance between the nuts (D1) and the plate, thereby the extension (L) and the compression limits (C) allowed for the joint.
- Do not exceed the maximum allowed values, indicated in the product specifications.

处置

对于输送危险介质（有毒、腐蚀性……）的阀门，如果阀门中可能残留残余物，请采取适当的安全预防措施并进行必要的清洁。负责人员必须经过培训并配备适当的防护装置。

在处置之前，请按照不同材料拆卸阀门并分离组件。请参考产品资料获取更多信息。根据当地和现行有效的法规并在考虑环境的情况下，将分类的物料送交回收利用（例如金属材料）或进行处置。

DISPOSAL

For valve operating with hazardous media (toxic, corrosive...), if there is a possibility of residue remaining in the valve, take due safety precaution and carry out required cleaning operation. Personnel in charge must be trained and equipped with appropriate protection devices. Prior to disposal, disassemble the valve and separate the component according to various materials. Please refer to product literature for more information. Forward sorted material to recycling (e.g. metallic materials) or disposal, according to local and currently valid legislation and under consideration of the environment.